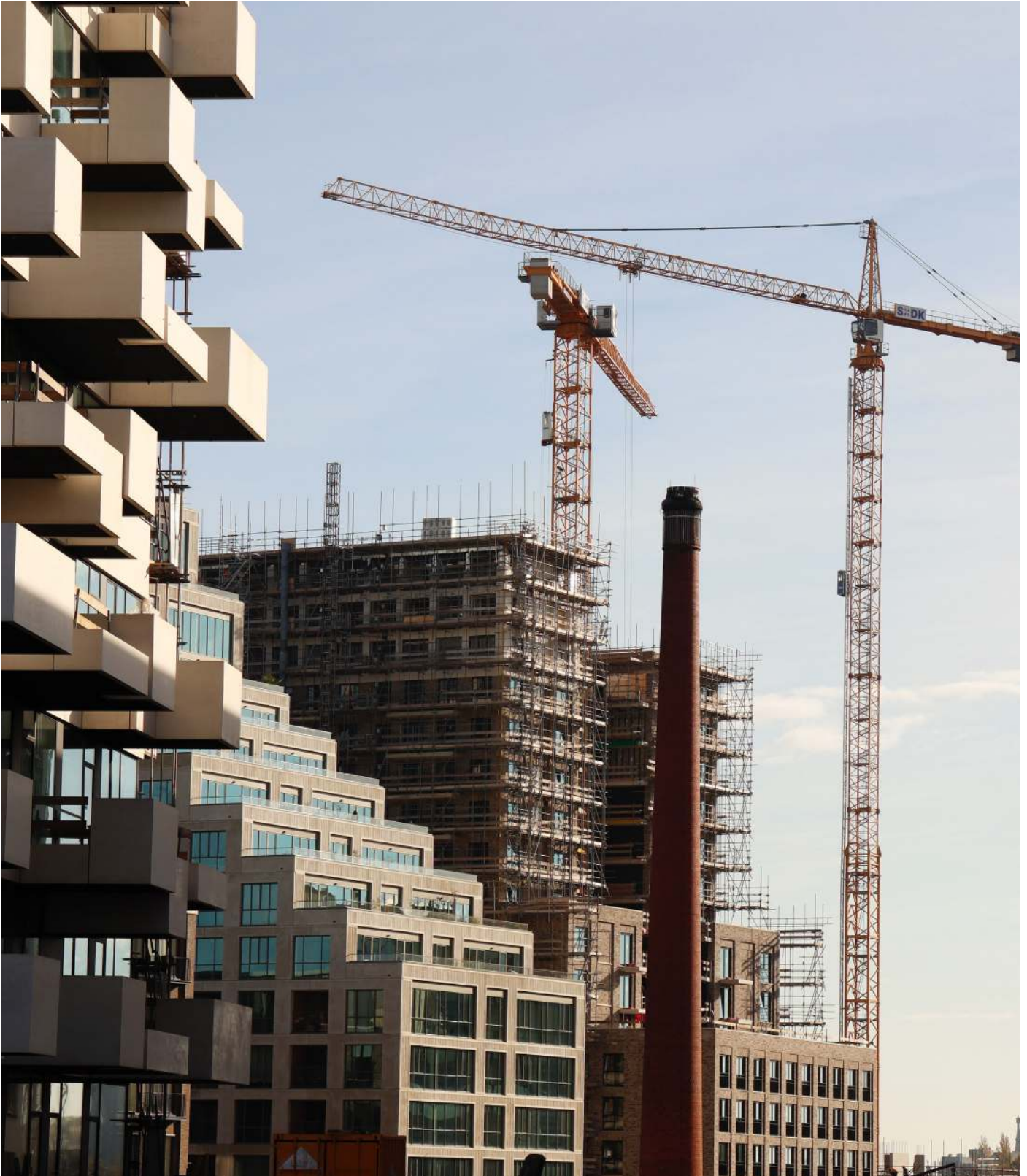




**WE DON'T JUST MANUFACTURE
WE CAN PRODUCE ACCORDING
TO YOUR SPECIFICATIONS**



BASIC INFO

20 yrs

Experience in Construction Chemicals

600+

Completed Projects

200+

Quality Products

5000 m²

Manufacturing Plant

80+

Competent Personnel

Confidence as a supplier. You deal direct to manufacturer and installer.

Well trained and skilled installers and applicators.

Well served in substrate design specification, preparation and products.

Well equipped with equipment and tools for surface preparations.

One of the leading manufacturers, installers, and suppliers in the industry for Construction Chemicals, Paint and Coatings, PU Mortars, Epoxy Floorings, Waterproofing, and other allied products for the past twenty (20) years.



**WE DON'T JUST MANUFACTURE
WE CAN PRODUCE ACCORDING
TO YOUR SPECIFICATIONS**

ABOUT US

Mission

It is our aim to provide quality products and services related to Construction and its application while promoting harmonious, safe and conducive workplace among team members with continuous innovation and growth of the company by increasing its market and sales coverage globally.

Vision

A Global Partner in Construction Chemicals and Application Services which provides the best quality of products from the competent and reliable team that will exceed customer satisfaction.

Core Values

- God-Centered
- Integrity
- Committed
- Excellence



*Office located at Unit 3 & 4, 138-142 M. L. Quezon Avenue, Brgy. San Isidro, Angono, Rizal 1930



*Plant / Warehouse located at 099 National Rd, Brgy Calumpang, Binangonan, Rizal

Grand Aces Ventures, Inc., early involvement in the specialized construction products business started since 2002.

Managed by competent and experienced officers and personnel in the construction industry, the company is envisioned to bring quality products and services to its clients. The company's goal is to be the benchmark in its leadership as a supplier of construction chemicals in the Philippines.

In response to the growth potential in the country and to develop our position in the marketplace, Grand Aces Ventures, Inc., a locally incorporated company was formed to promote quality products. This strategic move has allowed the Company to be more focused on the development in terms of image and market penetration.

Grand Aces Ventures, Inc., specializes in four core technologies: Concrete, Cement, Polymer Chemistries, Grinding Aids for cement manufacturer and application services. The company develops and manufactures its own products that meet the needs of the construction industry nationwide. Development of these technologies is coordinated with its team of technical experts committed to respond to customer's special and specific requirements. The company is also actively engaged in the development of innovative products.

As part of the company's commitment to environmental protection, Grand Aces Ventures INC. is continuously developing products using indigenous materials not harmful to the environment.



**WE DON'T JUST MANUFACTURE
WE CAN PRODUCE ACCORDING
TO YOUR SPECIFICATIONS**

PRODUCTS AND APPLICATION SERVICES



WE DON'T JUST MANUFACTURE
WE CAN PRODUCE ACCORDING
TO YOUR SPECIFICATIONS

CONCRETE REFURBISHMENT



Grand Aces has pioneered fundamental procedures and products for the restoration, repair, and protection of decaying and damaged concrete. Grand Aces was one of the first manufacturers in the Philippines to use carbon fiber technology for reinforcing and strengthening concrete structures. Grand Aces provides technologies for the entire life cycle of commercial buildings, residential properties, and infrastructure rehabilitation projects.

CONCRETE REFURBISHMENT PRODUCTS

- | | |
|-----------------------------|-----------------------------------------------------------------------------------------------|
| • GRANDPLUG 1 | - Rapid Setting Mortar for Plugging Leak on Running Water |
| • GRANDFIX MORTAR 101 | - Cementitious Concrete Repair Compound |
| • GRANDFIX MORTAR 105 | - Cementitious High Specification Repair Mortar System |
| • GRANDFIX MORTAR 315 | - Cementitious Polymer Modified Rendering Mortar for Interior and Exterior Walls and Ceilings |
| • GRANDPATCH 203 | - Cementitious Rapid Setting Repair Mortar for Pavement and Floor |
| • GRANDFIX MORTAR 210 FR | - Two-Component, Polymer Fiber Reinforced, Shrinkage Compensated Repair Mortar |
| • GRANDPATCH PAVER-CRETE | - Cementitious Compound for Re-Instatement of Concrete Pavement |
| • GRANDFIX MORTAR 311 | - Cementitious Polymer Modified Rendering Mortar for Interior and Exterior Walls and Ceilings |
| • GRANDFIX MORTAR 107 | - Cementitious Floor Topping for Concrete Pavements |
| • MASILYA EXPERT | - Ready-to-Use Multi-Purpose Putty |
| • GRAND EPOGROUT IJ | - Standard Epoxy Injection Resin |
| • GRAND EPOGROUT IJ/UW | - Underwater Epoxy Injection Resin |
| • MFORCE - CF-20 J / CF-30J | - High Performance Embrace Reinforcement Carbon Fiber Sheet for Structural Strengthening |
| • GRANDFIX 300CFL | - Carbon Fiber Laminating Epoxy |
| • GRAND EPOBOND STD | - Epoxy Resin Concrete Bonding Agent |
| • GRAND EPOBOND SS | - Slow Set Concrete Bonding Agent |

AREAS OF CONCRETE REPAIR

- Cement Based Water Plug
- Cement Based Repair Mortar
- Epoxy Resin Based Crack Injection



**WE DON'T JUST MANUFACTURE
WE CAN PRODUCE ACCORDING
TO YOUR SPECIFICATIONS**

CONCRETE REFURBISHMENT

GRANDPATCH 203

CEMENTITIOUS RAPID SETTING REPAIR MORTAR FOR PAVEMENT AND FLOORS



GRANDPATCH 203 is a cementitious pre-packed repair mortar with shrinkage compensation properties. It is supplied as a single component powder which only needs mixing with a specific quantity of water to produce a non-shrink, free flowing, fast setting and high strength mortar. It is a blend of inorganic cement, special fillers and chemical additives to control the rate of strength gain.

The cured mortar is durable and weather resistant and has excellent adhesion to concrete substrates. Its polymer modification provides good resistance to water, abrasion and impact.

GRANDPATCH 203 is ideal for use in heavily trafficked areas where a rapid return to service in 2 – 3 hours is critical.



CUSTOMER BENEFITS

- Easy to apply
- Shrinkage compensated
- High strength
- Abrasion and weather resistant
- Excellent adhesion to concrete
- Rapid strength gain – will accept vehicular traffic within 2 to 3 hours.

RECOMMENDED FOR

- General patching repair work
- Emergency reinstatement of deteriorated concrete
- For repair of runways and apron
- Areas where wheeled traffic requires fast return to service
- Ideal repair works for driveways, bridges, seaports, loading bays, parking decks, etc.

GRANDPLUG 1

RAPID SETTING MORTAR FOR PLUGGING LEAK ON RUNNING WATER



GRANDPLUG 1 is supplied as a dry powder which needs only the addition of water to produce an ultra-rapid set plugging mortar. It is designed to seal leaks in running water where conventional mortars would be washed away. It is ideal to seal leaks prior to applying waterproof renderings in basement. Upon setting, the product develops excellent structural strength and water tightness.



CUSTOMER BENEFITS

- Rapid setting: stops leaks quickly
- Easy to use: needs only water to be added
- Durable: low porosity of the patch ensures permanence of the repair
- Chloride free: no risk to steel reinforcement
- Stable: similar thermal capability as parent concrete

RECOMMENDED FOR

- Patching concrete and mortars
- Stopping leaks
- Repairing concrete pipe and precast concrete
- Repairing honeycombs, cracks and spalls
- Repairing water retaining structures
- Anchoring of bolts and fixtures
- Filling holes



**WE DON'T JUST MANUFACTURE
WE CAN PRODUCE ACCORDING
TO YOUR SPECIFICATIONS**

CONCRETE REFURBISHMENT

GRANDFIX MORTAR 105

CEMENTITIOUS HIGH SPECIFICATION REPAIR MORTAR SYSTEM



GRANDFIX MORTAR 105 is a cementitious pre-packed repair mortar with shrinkage compensation properties. It is supplied as a single component powder which only needs mixing with specific quantity of water to produce a highly consistent repair mortar for structural and masonry repairs



CUSTOMER BENEFITS

- Easy to apply
- Suitable for hand and spray application
- Shrinkage compensated
- Medium to high build on prepared vertical surfaces
- Eliminates the need for formwork
- Composition ensures excellent adhesion
- Water tightness, special additives ensure optimum density and water repellency of cured surfaces

RECOMMENDED FOR

- General concrete and masonry repairs
- Horizontal, vertical and overhead repairs to restore "covercrete"
- Filling voids
- Horizontal, vertical and overhead applications
- In situations where the substrate is permanently wet or damp, e.g. sea-walls, quays, etc.

GRAND EPOGROUT IJ

STANDARD EPOXY INJECTION RESIN



GRAND EPOGROUT IJ, a general purpose epoxy injection resin is a 2-component solvent-free, non-pigmented epoxy resin compound with low viscosity.



CUSTOMER BENEFITS

- Low viscosity
- Economical
- Resistant to wide range of chemicals
- Virtually impermeable therefore protecting the concrete against carbonation
- High compressive and tensile strength
- High slant shear bond strength

RECOMMENDED FOR

- Structural repair of cracked concrete by injection
- Repair and filling of small hairline cracks in reinforced concrete structures
- Primer for solvent-free coating and topping systems
- Sealer for cement-based surface



**WE DON'T JUST MANUFACTURE
WE CAN PRODUCE ACCORDING
TO YOUR SPECIFICATIONS**

ADMIXTURES



Grand Aces provides a wide range of products in admixtures such as retarders, plasticizers, integral waterproofing, and many other materials that specialize in enhancing the quality of the concrete.

Grand Aces innovate admixture materials to meet the requirement needed for the concrete. Quality admixture is the key to a better and enhanced quality concrete.

CONCRETE ADMIXTURE PRODUCTS

- | | |
|---------------------------|----------------------------------------------------------|
| • GRANDPLAST ACCELERATOR | - Water Reducing and Set Accelerating Admixture |
| • GRANDPLAST SHOTCRETE SS | - Sprayed Concrete Accelerator |
| • GRANDPLAST 1010WP | - Integral Waterproofing Concrete Admixture |
| • GRANDPLAST IW100P | - Integral Waterproofing Powder Admixture |
| • GRANDPLAST 600R | - Retarding Admixture |
| • GRANDPLAST 1011P | - Water Reducing Admixture |
| • GRANDPLAST 1930SP | - Superplasticising High Range Water Reducing Admixture |
| • GRANDPLAST 1950SPR | - Workability Retention Superplasticising Admixture |
| • GRANDPLAST 2023SP | - Superplasticising, High Range Water Reducing Admixture |
| • GRANDPLAST 2030SP | - Superplasticising, High Range Water Reducing Admixture |
| • GRANDPLAST UWA | - Concrete Admixture for Underwater Concreting |
| • GRANDPLAST BLOCKSAVE | - Cement Saver for Semi-dry Concrete |
| • GRANDPLAST 4018PC | - High Performance Admixture based on PC Polymers |
| • GRANDPLAST 5025PC | - High Performance Admixture based on PC Polymers |

CUSTOMER BENEFITS

- Gives increased workability to speed up construction by reducing placing time, equipment required and labor element.
- Gives substantial and economical cement savings without strength or workability loss.
- Gives an early age strength development of up to 100% at 24 hours.
- Allows reduction of added water which increases concrete density and reduces porosity, resulting on improved water penetration resistance.
- Reduces concrete segregation thus improving surface finish.
- Chloride-free.
- Reduces or eliminates need for compaction thus saving time and money



**WE DON'T JUST MANUFACTURE
WE CAN PRODUCE ACCORDING
TO YOUR SPECIFICATIONS**

ADMIXTURES

GRANDPLAST 1010WP

INTEGRAL WATERPROOFING CONCRETE ADMIXTURE



GRANDPLAST 1010WP is a concrete admixture in liquid form that acts both as highly efficient plasticizer and waterproofing agent.



CUSTOMER BENEFITS

- Increased strength and durability
- Improved water tightness
- Improved workability without increasing water content
- Allows easier compaction leading to denser concrete and superior finish
- Reduced shrinkage
- Chloride free – does not attach reinforcement

RECOMMENDED FOR

- Reservoir and dams
- Canals and culvert tunnels
- Sewerage works and whatever waterproof concrete is required.

GRANDPLAST 1930SP

SUPERPLASTICISING HIGH RANGE WATER REDUCING ADMIXTURE



GRANDPLAST 1930SP is a dark brown liquid admixture based on blended organic polymers. GRANDPLAST 1930SP will, dependent on dosage level and mix designs, enhance the workability which can be exploited in two ways: by producing a concrete which is highly flowable and by accelerating early age strength development by reducing water cement ratios.



CUSTOMER BENEFITS

- Gives increased workability to speed up construction by reducing placing time, equipment required and labor.
- Gives substantial and economical cement savings without strength or workability loss
- Gives an early age strength development of up to 100% at 24 hours.
- Allows reduction of added water which increases concrete density and reduces porosity, resulting on improved water penetration resistances.
- Reduces concrete segregation thus improving surface finish.
- Chloride free
- Reduces or eliminates need of compaction thus saving time and money.

RECOMMENDED FOR

- As a superplasticiser to produce highly fluid concrete requiring little or no vibration during placing e.g. where reinforcement is heavily congested.
- As a highly efficient water reducer without loss of workability resulting in reduced permeability and accelerated early strength gain.
- Ready mix applications
- Precast applications.



**WE DON'T JUST MANUFACTURE
WE CAN PRODUCE ACCORDING
TO YOUR SPECIFICATIONS**

ADMIXTURES

GRANDPLAST 600R

RETARDING ADMIXTURE



GRANDPLAST 600R is a dark brown liquid admixture instantly dispersible in water. It is formulated by extending or increasing the initial and final setting times of concrete.

The retarding properties of GRANDPLAST 600R is beneficial in concrete where high cement content or high temperatures are involved. Its effect can be used to retard the setting times of concrete. The setting time however will be related to the cement type and ambient temperature.



CUSTOMER BENEFITS

- Set retardation controls setting time of concrete.
- Set retardation allows extra placing time of concrete.
- Increased in setting time facilitates placing and compaction – cold joints in concrete pours may be avoided.

RECOMMENDED FOR

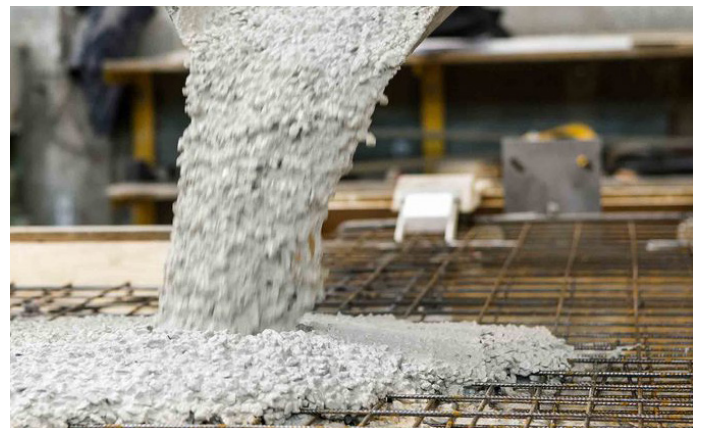
- Reservoir and dams
- Canals and culvert tunnels
- Sewerage works and whatever waterproof concrete is required.

GRANDPLAST ACCELERATOR

WATER REDUCING AND SET ACCELERATING ADMIXTURE



GRANDPLAST ACCELERATOR is supplied as a light straw colored liquid. It is guaranteed as chloride free accelerating admixture. The addition of GRANDPLAST ACCELERATOR to concrete mixes accelerates both the setting and rate of strength gain. The strength improvements are most significant during the first 18 hours.



CUSTOMER BENEFITS

- Early setting
- Easy to use
- High early strength
- Safe in pre-stressed and reinforced concrete because its chloride free
- Increased workability and strength because of its plasticising action

RECOMMENDED FOR

- Effective at low temperatures
- To accelerate the setting and early strength gain of Portland cement concrete and mortar mixes
- Acts as plasticizer giving a significant increase in early strength and ultimate strength
- Typical applications include precast concrete, concrete and mortar placed in cold weather to accelerate setting.



**WE DON'T JUST MANUFACTURE
WE CAN PRODUCE ACCORDING
TO YOUR SPECIFICATIONS**

WATERPROOFING



Grand Aces provides a diverse range of below and above-ground waterproofing products and systems, including flexible sheet membranes, liquid-applied membranes, waterproofing mortars, and mortar admixtures, injection grouts, and coatings.

Grand Aces ensures that its product line is up to date to address the never-ending problem of construction waterproofing.

WATERPROOFING PRODUCTS

- | | |
|---------------------------|-----------------------------------------------------------------------------|
| • GRANDPRUF CM | - Cementitious Crystallization Waterproofing System |
| • GRANDPRUF CWS | - Cementitious Waterproofing Slurry |
| • GRANDPRUF FLEX 72 | - High Technology Elastomeric Cementitious Waterproofing Membrane |
| • GRANDPRUF FLEX 50 | - Flexible Cementitious Waterproofing Coating |
| • GRANDPRUF SLURRY BB | - Polymer Cement Waterproofing Membrane |
| • GRANDPRUF FLEX L45 | - Modified Acrylic Polymer for Flexible Cementitious Waterproofing Membrane |
| • GRANDPRUF ACRYFLEX | - Elastic Acrylic Coating |
| • GRANDPRUF ACRYSEAL | - Flexible Sealer and Waterproofer |
| • GRANDPRUF PU XPOSED | - PU Hybrid Waterproofing Membrane |
| • GRANDPRUF RAIN PROTECT | - Waterproofing Liquid - Clear |
| • GRANDPRUF TA PRIMER | - Liquid Based Bituminous Primer Paint |
| • GRANDPRUF TA MEMBRANE | - Torch Applied Waterproofing Membrane |
| • GRANDPRUF 1300 | - Elastomeric Liquid Applied Membrane |
| • GRANDPRUF WATERSTOP | - Polyvinyl Chloride Type Waterstop |
| • GRANDPRUF SWELLABLE WS | - Concrete Construction Joints, Swellable Waterstop |
| • GRANDPRUF SWELLSEAL HBR | - Hydrophilic Rubber Waterstop |

AREAS OF WATERPROOFING

- Cementitious Flexible Waterproofing Membrane
- Cementitious Crystallization Waterproofing System
- PU Bituminous Membrane (Water Based)
- PU Waterproofing System (Solvent Based)
- Flexible Elastomeric Water-Based Coating
- Torch-Applied Waterproofing Membrane
- Integral Waterproofing (Self Healing System)



**WE DON'T JUST MANUFACTURE
WE CAN PRODUCE ACCORDING
TO YOUR SPECIFICATIONS**

WATERPROOFING

GRANDPRUF PU XPOSED

PU HYBRID WATERPROOFING MEMBRANE



GRANDPRUF PU Xposed is a single liquid component, PU Hybrid Membrane which offers great stability and durability. It is flexible, tough, and fast curing capable of drying in 6-8 hours depending on the number of coats and temperature. The PU hybrid membrane can bridge and seal hairline cracks. Its properties make it an excellent choice for achieving airtightness and perfect waterproofing on a multitude of surface and substrates.



CUSTOMER BENEFITS

- Flexible, durable and UV Resistant.
- Can bridge hairline cracks.
- Maintains flexibility in a wide range of temperature.
- Excellent waterproofing qualities
- Excellent adhesion to most substrates
- Seamless, no joints
- No reinforcement required
- Pre-packed, easy to mix and apply
- Able to withstand light foot trafficking
- Algae and fungus resistant

RECOMMENDED FOR

- Waterproofing for facades, terraces and balconies
- Waterproofing for concrete roofs including walk-ways and planter boxes.

GRANDPRUF FLEX 72

HIGH TECHNOLOGY ELASTOMERIC CEMENTITIOUS WATERPROOFING MEMBRANE



GRANDPRUF FLEX 72 is a two component, flexible cementitious waterproofing membrane. It consists of selected cement blend with well graded fillers and synthetic resin. It could be applied unto damp substrates by brush, roller or spray. Grandpruf Flex 72 is capable of bridging hairline cracks.



CUSTOMER BENEFITS

- Flexible, durable and weather resistant
- Excellent adhesion to most substrate
- Excellent waterproofing qualities - able to withstand high hydrostatic pressure
- Breathable membrane – permeable to water vapour and yet impermeable to water
- Bridge hairline cracks
- Nontoxic - suitable for use in waterproofing of potable water tanks
- Pre-packed - easy to mix and apply
- Can be applied onto damp surface
- Able to withstand light foot trafficking
- Algae and fungus resistant

RECOMMENDED FOR

- Basement walls
- Reservoirs, sumps, planter boxes, potable water tanks, culverts, canal
- Water retaining structures, etc.
- Swimming pools and features
- Kitchen and toilets
- Domes and concrete structures
- Roof deck and balconies
- Fire wall



**WE DON'T JUST MANUFACTURE
WE CAN PRODUCE ACCORDING
TO YOUR SPECIFICATIONS**

WATERPROOFING

GRANDPRUF CM

CEMENTITIOUS CRYSTALLIZATION WATERPROOFING SYSTEM



GRANDPRUF CM is a crystalline waterproofing formulation of selected blends of cement, very fine treated silica sand and various propriety active chemicals providing a lasting imperviousness to water. GRANDPRUF CM is a unique chemical treatment for the waterproofing and protection of concrete. In the presence of moisture, the active chemicals in GRANDPRUF CM penetrate concrete and react chemically with free lime to produce insoluble crystals. This crystalline growth reduces porosity by blocking capillaries and filling hairline non-structural cracks caused by shrinkage or expansion.



CUSTOMER BENEFITS

- Ready to use, easy to apply
- Very economical
- For internal and external applications
- Can be applied on green concrete
- Can be painted over
- For use in contact with potable water
- Effective treatment for hydrostatic conditions

RECOMMENDED FOR

GRANDPRUF CM can be applied on both new and old structures either on the water retaining side or on the negative side. GRANDPRUF CM is recommended for the following typical applications:

- Water treatment and sewage structures
- Basement walls
- Irrigation tunnels
- Supporting walls and columns
- Tunnels, manholes, silos
- Foundation slabs inside underground garages

GRANDPRUF FLEX 50

FLEXIBLE CEMENTITIOUS WATERPROOFING COATING



GRANDPRUF FLEX 50 is a two-component polymer modified flexible cementitious waterproofing membrane. It can be easily applied by brush, roller, spray or trowel to obtain the desired texture. GRANDPRUF FLEX 50 is capable of bridging hairline cracks. The degree of resistance of GRANDPRUF FLEX 50 to water pressure depends on the coating thickness.



CUSTOMER BENEFITS

- Flexible, durable and weather resistant
- Excellent adhesion to most substrate
- Excellent waterproofing qualities – able to withstand high hydrostatic pressure
- Flexible coating to bridge hairline cracks
- Non-toxic – suitable for use in waterproofing of potable water tanks
- Pre-packed – easy to mix and apply
- Can be applied onto damp surface
- Bonds to damp concrete

RECOMMENDED FOR

- Potable water retaining structures
- Basement walls
- Reservoirs, sumps, planter boxes, potable water tanks, culverts, canal, water retaining structures, etc.
- Swimming pools and features
- Kitchen and toilets
- Domes and concrete structures
- Roof deck and balconies
- Fire wall



**WE DON'T JUST MANUFACTURE
WE CAN PRODUCE ACCORDING
TO YOUR SPECIFICATIONS**

PROTECTIVE COATING



From concrete protection, wood protection, and metal protection, Grand Aces have it all! Our line of products uses different technologies such as epoxy, silicone, acrylic and many more.

PROTECTION & PREVENTION SYSTEM PRODUCTS

- | | |
|---------------------------------|------------------------------------------------------------------|
| • GRANDMARINE CS PRIMER | - Conventional Metal Primer |
| • GRANDMARINE 215 | - Polyamide Epoxy Primer / Anti-Corrosive Coating |
| • GRANDMARINE 705 | - High Performance Epoxy Metal Primer |
| • GRANDMARINE 707 | - High Performance Anti-Corrosive Epoxy Coating |
| • GRANDMARINE 400 RUSTBUSTER | - Self priming Hi-Build Epoxy Coating |
| • GRANDMARINE 930 | - Zinc Rich Epoxy Coating |
| • GRANDMARINE 600HP | - Epoxy Coal Tar Enamel |
| • GRANDMARINE CS TOPCOAT | - Conventional High Gloss Enamel |
| • GRANDMARINE 800 HP | - High-Build/ High Gloss Epoxy Topcoat |
| • GRANDMARINE 900 | - Anti-Fouling Coating |
| • GRANDMARINE EPOXY | - Two-Component Polyamide Epoxy for Marine Applications |
| • GRANDMARINE EPOXY PUTTY | - Epoxy for Total Encapsulation of Wooden Boats |
| • GRANDMARINE ALL-PURPOSE EPOXY | - Premium Grade Epoxy with Excellent Bonding Properties |
| • GRANDMARINE 500 | - Two-component Epoxy for the WEST SYSTEM of Boat Building |
| • GRANDKOTE SB10 | - Silane-Siloxane Penetrating Water Repellant Treatment |
| • GRANDKOTE WB52 | - Silane-Siloxane Penetrating Water Repellant Emulsion Treatment |
| • GRANDKOTE KMS SEALER | - General Purpose Concrete and Bricks Sealer |
| • GRANDKOTE EPS | - Two-Component Epoxy Penetrating Sealer |
| • GRANDKOTE RB50 | - Resin-Based Penetrating Sealer |
| • METAL PRIMER | - Rust Inhibitive Coating |
| • EPOXY PRIMER | - Rust Inhibitive Epoxy Based Coating |
| • GRAND CEMENT REMOVER | - Concrete Remover, Cleaning and Etching Agent |
| • GRAND EPOXY REDUCER | - Thinner/Reducer |
| • GRANDKOTE 6200 | - Tank Lining Epoxy Resin |
| • GRANDKOTE PU COATING | - U.V. Resistant Polyurethane Coating |
| • GRANDKOTE ECT | - Two Components Polyamide Cured Epoxy Coal Tar |
| • ACRYLIC EMULSION | - Clear Acrylic Emulsion Protective Coating |



**WE DON'T JUST MANUFACTURE
WE CAN PRODUCE ACCORDING
TO YOUR SPECIFICATIONS**

PROTECTIVE COATING

EPOXY PRIMER

RUST INHIBITIVE EPOXY BASED COATING



EPOXY PRIMER is a rust inhibitive coating that is suitable for a variety of substrates. It is a two-pack formulation based on high-grade epoxy resins and polyamide curing agents. A versatile primer compatible with a wide range of topcoats. It forms excellent coating systems that are resistant to fuel, oils, solvents, salt sprays, acid fumes and most organic and inorganic chemicals.



CUSTOMER BENEFITS

- Compatible with a wide variety of topcoats
- Excellent corrosion resistance
- Excellent adhesion

RECOMMENDED FOR

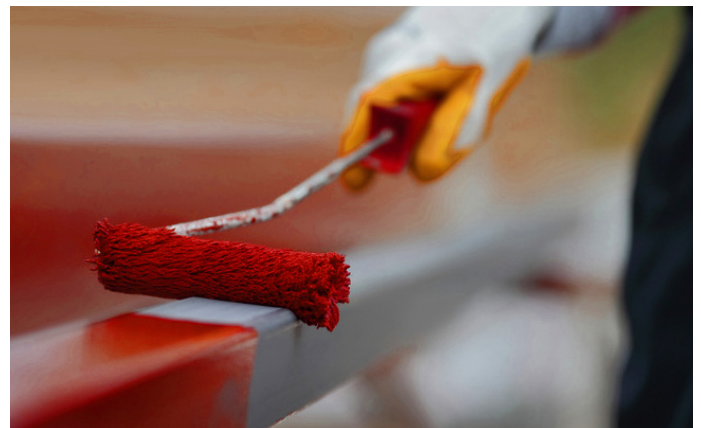
- Primer for surfaces of steel tanks, coastal installations, galvanized iron, pipelines, aluminum, structural steel, etc.

METAL PRIMER

RUST INHIBITIVE COATING



METAL PRIMER is a rust inhibiting primer with good adhesion to steel and iron surfaces. It provides outstanding corrosion resistance to iron and steel.



CUSTOMER BENEFITS

- Excellent corrosion resistance
- Excellent adhesion

RECOMMENDED FOR

- All types of steel and iron such as trusses, gates, metal framing, roofs and window grills, etc.



WE DON'T JUST MANUFACTURE
WE CAN PRODUCE ACCORDING
TO YOUR SPECIFICATIONS

STRUCTURAL ENGINEERING



Foundation is the part of construction that you must never go wrong. Grand Aces ensures that you can never fail from the beginning of construction by providing the right product you need for building your foundation. From non-shrink grouts, curing compound and mold release agents, Grand Aces has them all.

STRUCTURAL ENGINEERING / STRUCTURAL STRENGTHENING PRODUCTS

- | | |
|------------------------------------------------|---------------------------------------------------------------------------------------------|
| • GRANDCURE 100WX | - Standard Polymeric Concrete Curing Membrane |
| • GRANDCURE PME 15 | - Standard Polymeric Concrete Curing Membrane |
| • GRANDCURE PME 25 | - Standard Polymeric Concrete Curing Membrane |
| • GRANDCURE RB215 | - Modified Acrylic Emulsion Curing Membrane |
| • GRANDGROUT XPA | - Plasticized Expanding Grout Admixture |
| • GRANDGROUT 5000 | - General Purpose Non-Shrink Cementitious Grout |
| • GRANDGROUT 8000 | - General Purpose Non-Shrink Cementitious Grout |
| • GRANDGROUT 11MS | - High Strength Non-Shrink Cementitious Grout |
| • GRANDGROUT 70HP | - Free Flowing, High Performance Non-Shrink Cementitious Grout |
| • GRANDGROUT PG | - Non-Shrink Cementitious Pumping Grout |
| • GRANDGROUT F4M | - Non-Shrink Cementitious Pumping Grout |
| • GRANDGROUT 100UW | - Non-Shrink Cementitious Grout for Underwater Application |
| • GRANDGROUT EPX100 | - Fast Setting Epoxy Grout |
| • GRANDGROUT EPX4000 | - Epoxy Resin Based Grout |
| • GRAND EPOBOND PSE | - Pile Splicing Epoxy |
| • GRANDTARD FDR100 | - General Purpose Retarder for Face Down Casting |
| • GRANDTARD SR10 | - Top Surface Retarder for Pavements and Other Face up Exposed Aggregate |
| • GRANDTARD SR/ELE | - Top Surface Retarder (Extra Light Etch) for pavements and Other Face up Exposed Aggregate |
| • GRANDTARD SR/LE | - Top Surface Retarder (Light Etch) for pavements and Other Face up Exposed Aggregate |
| • GRANDTARD SR/ME | - Top Surface Retarder (Medium Etch) for pavements and Other Face up Exposed Aggregate |
| • GRANDTARD SR/DE | - Top Surface Retarder (Depth Etch) for pavements and Other Face up Exposed Aggregate |
| • GRANDFORM OIL 1000 | - Release Agent for Concrete Formworks |
| • GRANDFORM OIL 400 | - Chemical Release Agent for Formworks |
| • GRANDFORM OIL 300S | - Release Agent for Formworks |
| • GRANDFORM EMULSION | - Mould Release Agent for Concrete Formworks |
| • GRANDFORM E3W | - Mould Release Agent for Concrete Formworks |
| • GRANDFORM E5W | - Mould Release Agent for Concrete Formworks |
| • GRAND PP FIBER | - Construction Fiber |
| • GRANDFORM COLOR RELEASE
(Range of Colors) | - Mould Release for Precast Shapes |



**WE DON'T JUST MANUFACTURE
WE CAN PRODUCE ACCORDING
TO YOUR SPECIFICATIONS**

STRUCTURAL ENGINEERING

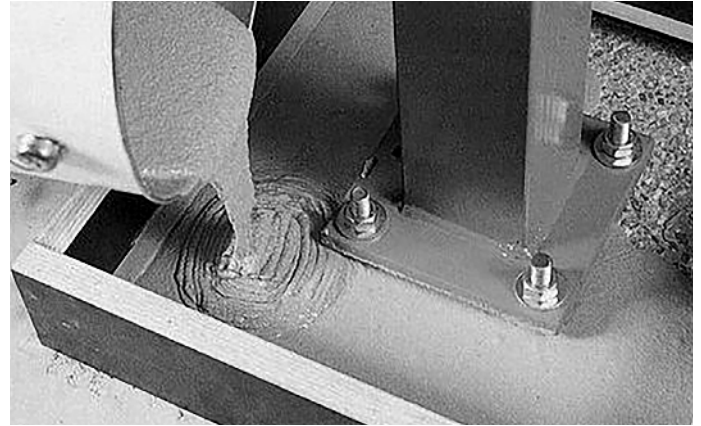
GRANDGROUT 5000

GENERAL PURPOSE NON-SHRINK CEMENTITIOUS GROUT



GRANDGROUT 5000 is a non-shrink, cement-based, high strength developing grout which is specially formulated for use in critical grouting operations where positive expansion and non-staining characteristics are required.

GRANDGROUT 5000 is an economical and easy to use material requiring the addition of water to produce a free-flowing non-shrink grout.



CUSTOMER BENEFITS

- Ease of application
- Positive expansion to ensure effective contact and support
- Minimal downtime
- Elimination of site batching errors
- High early strength and low permeability
- Elimination of staining or deterioration
- Chloride-free permitting use in contact with reinforcing steel

AREAS OF APPLICATION

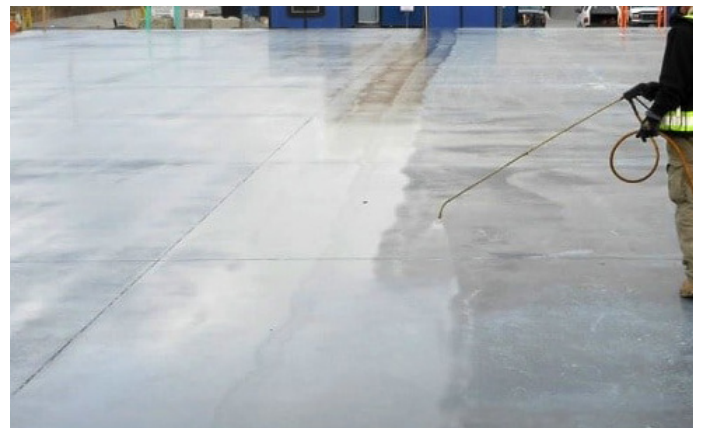
- To provide heavy duty support beneath load bearing units
- Grouting of precast wall panels
- Anchor bolt fixing
- Bedding bearing plates
- Concrete repairs and pressure grouting

GRANDCURE PME15

STANDARD POLYMERIC CONCRETE CURING MEMBRANE



GRANDCURE PME15 curing membrane is a polymeric emulsion, formulated to act as a highly efficient curing membrane on freshly – placed concrete to ensure maximum strength development.



CUSTOMER BENEFITS

- Reduces surface shrinkage and crazing in concrete
- Ease of application hence reducing labor cost
- Enables cement to hydrate to give maximum strength development
- Cost effective with excellent curing efficiency
- Eliminates need for messy damp hessian or polyethylene sheets
- Contains water based non-hazardous material and is supplied ready for immediate use
- Forms a non-staining continuous clear film on clean stain free concrete on ambient temperature

AREAS OF APPLICATION

Suitable for large areas of concrete construction such as:

- Runways
- Industrial concrete floors
- Motorways
- Bridgeworks
- Literally all exposed cement based surfaces



**WE DON'T JUST MANUFACTURE
WE CAN PRODUCE ACCORDING
TO YOUR SPECIFICATIONS**

STRUCTURAL ENGINEERING

GRANDFORM OIL 400

CHEMICAL RELEASE AGENT FOR FORMWORKS



GRANDFORM OIL 400 is a low viscosity release agent for all types of concrete formwork. It is specially formulated blend of mineral oils to give easy and complete release of concrete when applied to most types of forms. It is used for quick, clean and easy stripping of molds and for high quality, fair faced and stain-free concrete.



CUSTOMER BENEFITS

- Improved concrete off-form finish and ensure optimum release
- Promotes easy and efficient stripping of forms
- Non-staining and economical
- Minimizes cleaning of shutter before re-use
- Easy and inexpensive to apply by spray
- Improves surface quality
- Can be used on all types of formwork

RECOMMENDED FOR

- Application to all types of formwork including metal, wood, polyester or plywood where good surface finish and optimum release are required.

GRAND EPOBOND PSE

PILE SPLICING EPOXY



GRAND EPOBOND PSE is a two component fast setting epoxy resin formulation with a high chemical and physical strength designed primarily for bonding concrete piles. The cured epoxy resin product provides high compressive and flexural strength to the joint when used with fine aggregate as filler.



CUSTOMER BENEFITS

- Excellent adhesion
- Fast setting
- High compressive and flexural strength for bonding concrete piles

AREAS OF APPLICATION

- For bonding concrete piles



WE DON'T JUST MANUFACTURE
WE CAN PRODUCE ACCORDING
TO YOUR SPECIFICATIONS

BUILDING FINISHING



The secret to a perfectly painted wall is what's behind it. Grand Aces has the complete solution to ensure a perfect wall before painting. From plasters to wall primers, Gran Aces provides one of the most comprehensive sets of façade protection and decoration solutions, as well as interior wall finishing, for both residential and commercial buildings.

BUILDING FINISHING PRODUCTS

- GRANDFIX SKIM COAT 111 (2K)
 - GRANDFIX SKIM COAT SF (WHITE / GRAY)
 - GRANDFIX SKIM COAT STD (WHITE / GRAY)
 - GRANDFIX SKIM COAT 311
 - GRANDFIX BASE COAT 2K
 - GRANDFIX BASE COAT 1K
 - GRANDFIX TFC
 - GRANDFIX STUCCO
 - GRAND COATEK S
 - PINTAKOTE
- Ultra Paste Skim Smoothing to be Mixed with Cement
 - Cementitious Polymer Modified Skim Coat (Super Fine)
 - Cementitious Polymer Modified Skim Coat
 - Cementitious Polymer Modified Rendering Mortar for Interior and Exterior Walls and Ceilings
 - Adhesive for Bonding Exterior Insulation and Finishing System (EIFS) for Buildings
 - Adhesive for Bonding Exterior Insulation and Finishing System (EIFS) for Buildings
 - Texture Finish Coat
 - Decorative Textured Finish Coat
 - Concrete Primer and Sealer
 - Flat Latex Paint

AREAS OF EXTERIOR INSULATION AND FINISHING SYSTEM (EIFS)

- Base Coat Adhesive
- Decorative Finish Coat
- Stucco - Range of Colors
- Textured Non-Cementitious



**WE DON'T JUST MANUFACTURE
WE CAN PRODUCE ACCORDING
TO YOUR SPECIFICATIONS**

BUILDING FINISHING

GRANDFIX TFC

TEXTURE FINISH COAT



Grandfix TFC is a texture finish coat made from 100% Acrylic polymer which is typically trowel applied to provide an attractive, durable, and weather resistant finish coat specially to EIFS (External Insulation Finishing System), Stucco, or interior wall surfaces.



CUSTOMER BENEFITS

- Grandfix TFC is ready mixed from the factory and available in a wide variety of colors. It provides the architect, designer, or owner with a new level of performance and durability in an elegant architecture finish. Grandfix TFC can be applied to EIFS, drywall, stucco, concrete, and masonry substrates, and is suitable for most building types. Grandfix TFC remains slightly flexible when cured, making it resistant to cracking as the moisture content of the substrate decreases over time.

GRANDFIX SKIM COAT SF

CEMENTITIOUS POLYMER MODIFIED SKIM COAT



GRANDFIX SKIM COAT SF is a finishing cementitious compound specially formulated for concrete surfaces and pre-casts for indoor and outdoor use. It is supplied as a ready to use blend of dry powders which requires only the addition of clean water. The product exhibits excellent non-sag properties that provide great workability on overhead and vertical applications.

It is used independently as a render of up to 3mm thick to face up most types of masonry.



CUSTOMER BENEFITS

- Ready and easy to use
- Excellent bond to the concrete substrate
- Excellent non-sag properties that give good workability on both vertical and overhead applications
- Serves as initial coat for painting purposes
- High initial cohesiveness
- Yields homogeneous paste that eliminates surface crack lines

RECOMMENDED FOR

- Thin plastering
- Filling pinholes prior to overcoating
- General reprefilling over large areas of concrete, brickwork or masonry



**WE DON'T JUST MANUFACTURE
WE CAN PRODUCE ACCORDING
TO YOUR SPECIFICATIONS**

BUILDING FINISHING

PINTAKOTE

FLAT LATEX PAINT



It is a high quality acrylic water-based paint formulated to give durable flat finish for interior and exterior application.

Use as finish coat for concrete, masonry, bricks, hollow blocks, and cement boards. In some cases, it may be applied over properly primed wood or metal. It is recommended where heavy mildew and fungus growth are prevalent.



CUSTOMER BENEFITS

- Excellent resistance to alkali, water, humidity
- Good resistance to mold and mildew growth
- Durable
- Excellent hiding

RECOMMENDED FOR

- For interior and exterior concrete, masonry, bricks, hollow blocks, and cement boards. In some cases, it may be applied over properly primed wood or metal.

GRAND COATEK S

CONCRETE PRIMER AND SEALER



It is a water-based flat primer paint for all types of masonry, concrete, bricks and dry wall. It seals porous surfaces and prepares substrates for subsequent latex topcoats. It has excellent adhesion with substrate, low odor and non-flammable.



CUSTOMER BENEFITS

- Good adhesion on Skimcoat and plaster finish
- Ready to use and easy application
- Prevents efflorescent
- Good hiding ability

RECOMMENDED FOR

- For interior and exterior concrete, masonry, bricks, hollow blocks, and cement boards.



**WE DON'T JUST MANUFACTURE
WE CAN PRODUCE ACCORDING
TO YOUR SPECIFICATIONS**

FLOORING SYSTEMS



Grand Aces offers liquid applied floor finishes and solutions for protecting, upgrading, and finalizing floor surfaces in industrial, residential, commissary, and commercial settings. Our complete line of seamless flooring solutions meets the most stringent requirements for industrial and decorative floor systems. We employ a variety of technologies, such as epoxy, epoxy cementitious hybrid, cementitious topping, and polyurethane.

FLOORING SYSTEM PRODUCTS

- GRANDFLOR NM
- GRANDFLOR ME
- GRANDFLOR LEVELLER 10
- GRANDFLOR LEVELLER UL
- GRANDFLOR LEVELLER OL
- GRANDFLOR LEVELLER NS
- GRANDFLOR CFT
- GRANDFLOR ARS
- GRANDFLOR AS
- GRANDFLOR FLOORHARD 35
- GRANDFLOR FLOORHARD LSSH
- GRANDFLOR HARDENCRETE
- GRANDFLOR EFC
- GRANDFLOR EFC 100
- GRANDFLOR EPX SL1
- GRANDFLOR EPX SL2
- GRANDFLOR EPX SL4
- GRANDFLOR EPX TF 3
- GRANDFLOR EPX TF 5
- GRANDFLOR EPX TF 7
- GRANDFLOR MORTAR EP3
- GRANDFLOR PU MORTAR
- GRAND EPOPRIME CLEAR
- GRAND EPOBOND PUTTY
- GRANDCRETE ACR
- GRANDCRETE ASC
- GRANDCRETE PME
- GRANDFIX TILE ADHESIVE REGULAR
- GRANDFIX TILE ADHESIVE HEAVY DUTY
- GRANDFIX TILE ADHESIVE PREMIUM
- GRANDFIX TILE ADHESIVE TILE TO TILE
- GRANDFIX TILE ADHESIVE FAST SETTING
- GRANDFIX TILEGROUT (RANGE OF COLORS)
- GRANDKOTE RTP YELLOW
- GRANDKOTE ANTI SLIP
- Non-Metallic, Cementitious Surface Hardener
- Heavy duty, Metallic, Cementitious Surface Hardener
- Self Levelling, Self-Smoothing Compound
- Underlayment Self Levelling, Self-Smoothing Compound
- Overlayment Self Levelling, Self-Smoothing Compound
- Normal Setting Self Levelling, Self-Smoothing Compound
- Cementitious Floor Topping for Concrete Pavements
- Concrete Acrylic Sealer (Range of Colors)
- Concrete Acrylic Sealer
- Dust Proofer, Surface Hardener and Sealing Compound for Concrete Floors
- Dust Proofer, Surface Hardener and Sealing Compound for Concrete Floors
- Lithium Hardener and Densifier
- Epoxy Floor Coating
- High Grade Epoxy Floor Coating
- 1mm Thick Flow Applied Epoxy Based Floor Topping
- 2mm Thick Flow Applied Epoxy Based Floor Topping
- 4mm Thick Flow Applied Epoxy Based Floor Topping
- 3mm Thick, Heavy Duty Chemical and Abrasion Resistant Epoxy Floor Screed
- 5mm Thick, Heavy Duty Chemical and Abrasion Resistant Epoxy Floor Screed
- 7mm Thick, Heavy Duty Chemical and Abrasion Resistant Epoxy Floor Screed
- Epoxy Repair Mortar for Pavement and Floors
- Polyurethane Mortar Topping, Trowel applied
- Epoxy Resin based Primer for Resin Products
- Epoxy resin putty
- Acrylic Emulsion Cement Modifier and Concrete Bonding Agent
- Polymer Bonding Aid and Mortar Additive
- Bonding Agent for Concrete, Tiles and Mortar
- Standard Cement-based Adhesive
- Heavy Duty Cement-based Adhesive
- Premium Cement-based Adhesive
- Porcelain and Ceramic Tile Adhesive
- Wall and Floor Fast Setting Adhesive
- Tile Joint Filler
- Reflectorize Traffic Paint
- Coating for Anti Slip



**WE DON'T JUST MANUFACTURE
WE CAN PRODUCE ACCORDING
TO YOUR SPECIFICATIONS**

FLOORING SYSTEMS

GRANDFLOR LEVELLER 10

SELF-LEVELLING, SELF-SMOOTHING COMPOUND



GRANDFLOR LEVELLER 10 is a ready-to-mix self leveling mortar. It is used for leveling out rough and uneven floor surfaces prior to the application of floor finishes e.g. tiles, carpet, linoleum, rubber and other sheet flooring.

GRANDFLOR LEVELLER 10 contains a combination of especially selected cements, graded aggregates, synthetic polymers and a unique set control system. It requires only the addition of measured quantity of water to produce a smooth free flowing and self leveling material which can be applied 1–10mm in one application.



CUSTOMER BENEFITS

- Ready to use – one pack product, simply mixed with water on site
- Very good workability and flowability
- Very good mechanical and bonding strength
- Can be used directly onto concrete floors to provide smooth surface without screeding
- Quick, easy laying and fast hardening
- Can be feather edged to provide a smooth finish

RECOMMENDED FOR

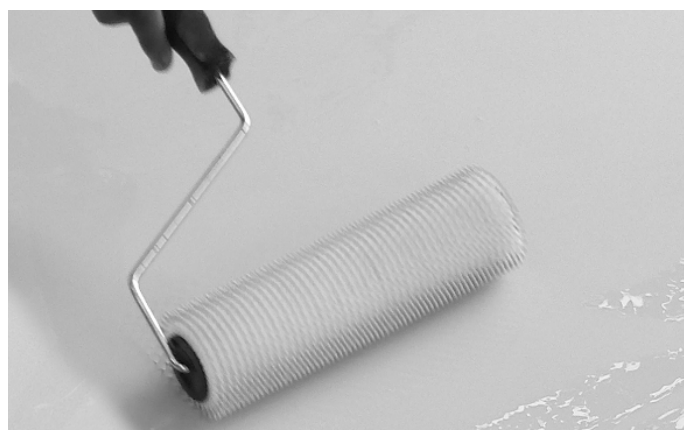
- Interior and exterior floors for houses, buildings and warehouses.

GRANDFLOR EFC

EPOXY FLOOR COATING



GRANDFLOR EFC is a two component, polyamide cured epoxy glossed floor coating formulated from carefully selected, highest grade epoxy resin and curing agent manufactured under strict quality control standards. The cured film forms a hard but flexible coating with excellent adhesion to clean concrete, steel and wooden surfaces with impervious finish which is easily cleaned.



CUSTOMER BENEFITS

- Durable, hard wearing surface with excellent abrasion resistance and adhesion to substrates
- Easier to clean resulting in low maintenance costs
- Attractive as available in a range of colors to improve the working environment.
- Designed for a general maintenance coating where gloss and color retention are desired.

RECOMMENDED FOR

- Storage tanks
- Marine vessel and structures
- Equipment for mining, chemical, textile, food, power, fertilizer, sugar and others
- Production areas
- Warehouses
- Gasoline station and others



**WE DON'T JUST MANUFACTURE
WE CAN PRODUCE ACCORDING
TO YOUR SPECIFICATIONS**

FLOORING SYSTEMS

GRANDFLOR NM

NON-METALLIC SURFACE HARDENER



GRANDFLOR NM is a pre-mixed, nonmetallic, ready to use product. It is designed to be applied as a dry shake over freshly floated concrete to provide a hard wearing and durable monolithic floor.

GRANDFLOR NM contains hard wearing graded aggregates, portland cement and other proprietary ingredients to improve workability.

GRANDFLOR NM is available in natural (concrete gray) color as standard. Special colors could be produced on request for large orders.



CUSTOMER BENEFITS

- Durable, hard wearing surface with good abrasion resistance
- Provides a good impact resistance
- Provides a heavy-duty finish for longer serviceable life than plain concrete
- Easier to clean resulting in low maintenance costs
- Resistance to oil and grease penetration
- Dense surface, reduces dusting
- Easy and economical to apply

RECOMMENDED FOR

- Factories
- Showrooms
- Loading bays
- Repair workshops
- Warehouses
- Industrial and commercial floor surface subject to heavy traffic and severe impact

GRANDFIX TILE ADHESIVE HEAVY DUTY

HEAVY DUTY CEMENT-BASED ADHESIVE



GRANDFIX TILE ADHESIVE HEAVY DUTY is a cement-based adhesive designed for bonding all types of tiles for floor and wall installations. It is highly recommended for outdoor tiling, pool and water features, and all heavy-foot traffic areas.



CUSTOMER BENEFITS

- Strong Bond Adhesion
- Easy to use – just mix with water
- Can withstand structural movement
- Easy mixing and tiling
- Uniform bead profile especially used in thin bed application. Also applicable for thick bed application
- Water cleanable and non-toxic

RECOMMENDED FOR

- All types, sizes, and application of ceramic tiles.
- Fully vitrified tiles and natural stones applied for horizontal and vertical application, up to 60cmx60cm.
- Concrete slab and cement render.
- Brickwork and Blockwork.



**WE DON'T JUST MANUFACTURE
WE CAN PRODUCE ACCORDING
TO YOUR SPECIFICATIONS**

SEALANTS



Where are the areas in your building most vulnerable to water penetration? At the joints! Grand Aces provides a diverse range of high-performance and long-lasting sealants for building envelopes, interior finishing, and infrastructure construction. Typical applications include weatherproofing buildings by sealing movement joints between facade elements.

SEALANT PRODUCTS

- GRANDSEAL 3210 - One Part Moisture Cure Polyurethane Sealant
- GRANDSEAL STPE - Silyl-Terminated Polyether Sealant
- GRAND FIBERFILL - Concrete Joint Filler
- GRANDFOAM CORDCELL PE - Polyethylene Joint Backing Rod



**WE DON'T JUST MANUFACTURE
WE CAN PRODUCE ACCORDING
TO YOUR SPECIFICATIONS**

MAJOR PROJECT HIGHLIGHTS



WE DON'T JUST MANUFACTURE
WE CAN PRODUCE ACCORDING
TO YOUR SPECIFICATIONS

MAJOR PROJECTS



LEGAZPI CITY CENTER MALL
(EIFS APPLICATION)



ISUZU SHOWROOM, OTIS PANDACAN, MANILA
(FLOORING APPLICATION (GRANDFLOR SL2 & EFC100))



SAN AGUSTIN CHURCH
(WATERPROOFING APPLICATION)



SOUTH SUPERMARKET, VALENZUELA
(FLOORING APPLICATION (GRANDFLOR PU MORTAR))



WORKSPACE / ACACIA REALTY, MADRIGAL ALABANG
(WATERPROOFING: TA MEMBRANE AT ROOF DECK)



WATERPROOFING AT PARAGON CORPORATE CENTER
(GRANDPRUF PU XPOSED)



WE DON'T JUST MANUFACTURE
WE CAN PRODUCE ACCORDING
TO YOUR SPECIFICATIONS

COMPLETED PROJECTS

COMPLETED PROJECTS FOR THE YEAR 2022

Contractor / Owner	Date Started	Date Finished	Name of Project / Location	Scope of Works
AHMED MISTUL	1/20/2022	1/26/2022	AHMED MISTUL - Upper Bicutan, Taguig	Epoxy Coating: Grandflor EFC
GA CARECENTER MEDICAL & DENTAL CENTER	1/6/2022	1/26/2022	GA CARECENTER MEDICAL & DENTAL CENTER - Pembo, Makati, City	Epoxy Coating: Grandflor EFC / Grandkote 6200

COMPLETED PROJECTS FOR THE YEAR 2021

Contractor / Owner	Date Started	Date Finished	Name of Project / Location	Scope of Works
LMC / GT GO Construction	11/8/2021	12/18/2021	LMC / GT GO Construction - Pasay, City	Waterproofing: Grandpruf PU Xposed
NGCP Staff House	12/7/2021	12/16/2021	NGCP Staff House - Dasmariñas, Cavite City	Waterproofing: Grandpruf PU Xposed
WS BUILDERS / PHILAM LIFE	12/6/2021	12/15/2021	WS BUILDERS / PHILAM LIFE - Salcedo, Makati City	Waterproofing: Grandpruf PU Xposed
Malabon Propety Landholdings Inc.	11/15/2021	12/4/2021	Malabon Grand Hotel - Malabon	Waterproofing: Grandpruf Flex 50 & Grandpruf Acryflex (Beige)
Workspace / Acacia Realty		10/5/2021	Workspace/Acacia Realty - Madrigal Alabang	Waterproofing: TA Membrane at Roof Deck
Paragon / WS Builders	9/13/2021	11/15/2021	Paragon / WS Builders - Madrigal Alabang	Waterproofing: Grandpruf PU XPOSED at Roof Deck
Greenfield / Zitan BSMT 3	10/8/2021	11/8/2021	Greenfield - Mandaluyong	Waterproofing: Grandpruf CM / Grandpruf Acryflex
CAPE Antigua		10/22/2021	CAPE Antigua - Lucena City	Epoxy Injection / Structural repair
Chiang Residence / Suniga Construction		10/26/2021	Chiang Residence - Paniqui, Tarlac	Waterproofing: Grandflex 50 & Grandpruf PU XPOSED at Pavilion Deck
Greenfield Development Corporation		11/23/2020	Paseo 5 - Paseo De Sta Rosa	Waterproofing: Grandpruf PU XPOSED
Greenfield Development Corporation		1/8/2021	Paseo 3A - Paseo De Sta Rosa	Waterproofing: Grandpruf PU XPOSED
Greenfield Development Corporation		3/29/2021	Paseo 4B - Paseo De Sta Rosa	Waterproofing: Grandpruf PU XPOSED
Greenfield Development Corporation		7/22/2021	Laguna Central	Waterproofing: GRANDPRUF ACRYFLEX



**WE DON'T JUST MANUFACTURE
WE CAN PRODUCE ACCORDING
TO YOUR SPECIFICATIONS**

COMPLETED PROJECTS

COMPLETED PROJECTS FOR THE YEAR 2020

Contractor / Owner	Date Started	Date Finished	Name of Project / Location	Scope of Works
FGU Builders	8/14/2020	8/24/2020	Likha Residence - Cupang Alabang Muntinlupa	Waterproofing Works: Grandflex 50
State Properties Corporation	2/12/2020	12/28/2020	Amelie 14-78 - Las Pinas Versailles	Waterproofing Works: Grandflex 72
State Properties Corporation	1/20/2020	2/28/2020	Chateau Mansion - Las Pinas Versailles	Waterproofing Works: Grandflex 72
Bounty Fresh	1/20/2020	1/28/2020	Bounty Fresh Farm - Tarlac	Application of Grandflor PU Mortar
New Clinton Builders Inc	1/29/2020	8/6/2020	Re-construction of PWD Toilet and Wall G/F -BPO Centris Mall	Waterproofing: TA Membrane
KCD Builders Corp	7/31/2020	9/30/2020	Coca Cola Bottlers Plant - Zamboanga City	Self levelling Epoxy & Waterproofing Works
FGU Builders	7/15/2020	ongoing	Zobel Residence - Dasmariñas Village Alabang	Waterproofing: TA Membrane
Tendoy Construction and Devt Corp	1/13/2020	ongoing	PTRI Main Building - DOST Lower Bicutan Taguig City	Self levelling Epoxy
Greenfield Development Corporation	tba		Paseo 5 - Paseo De Sta Rosa	
Greenfield Development Corporation	tba		Paseo 3A - Paseo De Sta Rosa	
Greenfield Development Corporation	tba		Paseo 4B - Paseo De Sta Rosa	
Greenfield Development Corporation	tba		Laguna Central	

COMPLETED PROJECTS FOR THE YEAR 2019

Contractor / Owner	Date Started	Date Finished	Name of Project / Location	Scope of Works
Taytay Doctors Multi Specialty Hospital	2/11/2019	2/20/2019	Taytay Doctors (Cistern & Roof)- Taytay Hospital	Waterproofing Works
WS Builders	1/16/2019	3/4/2019	Phila Life Salcedo 126 Leviste St S.V. Makati City	Flooring & Waterproofing Works
FS Phil Corporation	2/9/2019	3/15/2019	Mauban Province	Waterproofing: TA Membrane
Delta Earth Moving Inc	3/18/2019	4/13/2019	Rest House - Arirangay La union	Roofdeck and Exterior Walls
Ota Konstrukt	1/18/2019	5/31/2019	Residential - Montervilla Subd Sun Valley Paranaque City	Waterproofing Works: Roofdeck & Floordeck
PSJR Construction	6/8/2019	6/28/2019	Philtrust Bank - Sta Cruz Manila	Waterproofing Works
Makati Development Corp	10/24/2018	7/18/2019	Ayala Malls Homerun Marikina	Waterproofing - Application of Cementitious Waterproofing Slurry BB
State Properties Inc	6/1/2019	8/1/2019	Ortigas Center II	Waterproofing: TA Membrane
Discovery World	9/19/2019	10/12/2019	Discovery Shores Boracay - Station 1 Brgy Balabag Boracay Malay Aklan	Grandflor PU Mortar
KCD Builders Corp	10/7/2019	11/12/2019	INEX 2 Storey Building - General Trias Cavite	Grandkote PU Coating
RND Electromech System Inc	11/9/2019	11/26/2019	Block 5 - Phase 3B Aseana Business	Waterproofing Works
Waterhead Well Drilling & Construction	10/24/2019	11/19/2020	Jollibee Maharlika - San Pablo Laguna	Waterproofing Works
KCD Builders Corp	10/24/2019	11/19/2020	Xavier University - Cagayan De Oro	Senior Highschool Building (STP)
Greenfield Development Corporation	11/29/2019	12/11/2019	Roofdeck Pavillion - Edsa Mandaluyong City	Waterproofing of Roofdeck at Pavillion
Fedco Paper Corporation	12/28/2019	1/6/2020	Carmerlay Industrial Estate Canlubang Laguna	Supply and Apply of EpogROUT IJ Injection
Greenfield Development Corporation	12/23/2019	3/9/2020	Paseo 3B Roofdeck - Paseo de Sta Rosa	Waterproofing of Roofdeck at Paseo de Sta Rosa
New Clinton Builders Inc	10/2/2019	2/13/2020	Eton Centris Mall - Quezon Ave	Waterproofing: TA Membrane
Taytay Doctors Multi Specialty Hospital	12/5/2019	12/7/2019	Taytay Doctors (Elevator Pit)- Taytay Hospital	Waterproofing Works



**WE DON'T JUST MANUFACTURE
WE CAN PRODUCE ACCORDING
TO YOUR SPECIFICATIONS**

COMPLETED PROJECTS

COMPLETED PROJECTS FOR THE YEAR 2018				
Contractor / Owner	Date Started	Date Finished	Name of Project / Location	Scope of Works
DMCI	2018		SKYWAY 2	GRANDGROUT 8000 - SUPPLY OF 500 BAGS
MATIERE/ CADCOR, MR. PHILIPPE GOUVARY	2018		SKYWAY 2	GRAND EPOGROUT IJ - SUPPLY OF LABOR AND MATERIALS (150 SETS)
MAKATI DEVELOPMENT CORP	4/27/2016	9/5/2018	SOUTH PARK ARVO MALL-Old Nestle Road, Alabang Muntinlupa	EXTERIOR INSULATION FINISH SYSTEM (EIFS)
MECEL CONS. - MARIKINA	2/22/2017	1/12/2018	AYALA MALL - HOMERUN-LIWASANG KALAYAAN MARIKINA HEIGHTS, MARIKINA CITY	SUPPLY AND APPLICATION OF GRANDFIX TFC (TEXTURED FINISH COATING)
KCD ORTIGAS	6/27/2017	1/17/2018	ORTIGAS HOSPITAL & MEDICAL CENTER -88 Ortigas Ave Ext, Cainta, 1900 Rizal	Waterproofing: TA Membrane /Cementitious Crystallization with Grandkote 6200
BEAUFORT CONDO	1/10/2018	2/5/2018	Beufort Tower Project-5th Avenue cor 23rd St. BGC Taguig City	WATERPROOFING WORK ROOFDECK AT EAST & WEST TOWER
R&M CONST	9/13/2017	10/11/2018	10 STOREY UN MURALLA GRANDE-UN COR. SAND MARCELINO AVE. ERMITA MANILA	WATERPROOFING WORKS on Cistern Tank / Toilet & Bath / Concrete Gutter / Machine Room
STATE PROPERTIES	8/24/2018	10/4/2018	Chiang Kai Shek College-1274 Padre Algue St, Tondo, Manila, 1012 Metro Manila	WATERPROOFING WORKS
WORLD FORM PACKAGING PHILS INC	8/24/2018	10/9/2018	PACKAGING WAREHOUSE-BARANGKA MANDALUYONG	GRANDFLOR EFC
Stedgro Inc	2/19/2018	4/28/2018		0 Waterproofing Works on Interior Wall
EFREN TEODORO - RESIDENTIAL	3/12/2018	4/18/2018	2/F Residential Deck-#349 Jasmine St. Nieves Hill Angono Rizal	WATERPROOFING WORKS
INTELLIGENT BEAUTY SKIN SOLUTIONS INC	3/21/2018	4/12/2018	BELO MEDICAL BLDG- 49 Connectcut St. Northeast Greenhills San Juan	WATERPROOFING WORKS
STEDGRO INC	4/5/2018	5/11/2018	ROOF AND FLOORING WORKS ON PRODUCTION AREA #4 Sevilla St. Virginia Summerville Subd. Mayamot Antipolo	WATERPROOFING WORKS: Grandpruf Acryflex
ANTONIO YU	4/14/2018	6/30/2018	JSMS ROOFDECK-JUAN SUMULONG MEM'ORIAL SCHOOL ESPIRITU ST.	Waterproofing: TA Membrane
MS. FRANCES GONZAGA- RESIDENTIAL	6/30/2018	7/10/2018	Gonzaga Res (Roofdeck)-#Ampuca St. Brgy. Iglesia Cardona Rizal	WATERPROOFING WORKS
JR BUILDERS COMPANY	5/16/2018	7/14/2018	ATI Phase 2	Epoxy Injection
PHILIPPE GOUVARY RESIDENCE	5/21/2018	7/12/2018	200 CALIRAYA STREET. AYALA ALABANG MUNTINLUPA CITY	Epoxy Injection
STEDGRO	5/30/2018	7/14/2018	WAREHOUSE (ROOFING) 2049 SEVILLA ST. VIRGINIA SUMMERVILLE PHASE 2 MAYAMOT ANTIPOLO CITY	WATERPROOFING ON WAREHOUSE (ROOFING): GRANDPRUF ACRYFLEX
KCD BUILDERS INC	5/30/2018	7/28/2018	ORTIGAS HOSPITAL & MEDICAL CENTER -88 Ortigas Ave Ext, Cainta, 1900 Rizal - addtl	Waterproofing: TA Membrane / Grandkote 6200
PSJR CONSTRUCTION	8/6/2018	9/20/2018	PHILTRUST BANK BLDG. (STA CRUZ MANILA)	CARBON FIBER -MFORCE -CF 30-J/GRANDFIX 300 CFL
KCD BUILDERS CORPORATION	7/19/2018	7/28/2018	XU - ALG-CIT Dormitory and Classroom Buildings (Phase 1) - Cagayan De Oro	Waterproofing works on Cistern Tank/Flooring works/STP in Dormitory & Grandkote PU HV / K10 Plus (P100)
STATE PROPERTIES CORP	8/7/2018	12/5/2018	ANTOINETTE DIANA & SOPHIE BUILDING-VERSAILLES DAANG HARI LAS PINAS	WATERPROOFING WORKS: Grandflex 72
GN3NG ENTERPRISES CONSTRUCTION & EQUIPMENT	10/15/2018	12/10/2018	EVIA BLDG. E PROJECT - ARCHITECTURAL-EVIA LIFESTYLE CENTER MALL DAANG HARI LAS PINAS CITY	Waterproofing: TA Membrane
TAYTAY DOCTORS	10/11/2018	12/31/2018	MULTI SPECIALTY HOSPITAL - EXIT WALL-TAYTAY RIZAL	WATERPROOFING WORKS: Grandflex 72 & Grandpruf Acryflex
REGINA PROJECT	12/18/2017	1/22/2018	Residencia De Regina Condominium Corporation-XAVIERVILLE QC	WATERPROOFING ON EXTRIOR WALL



**WE DON'T JUST MANUFACTURE
WE CAN PRODUCE ACCORDING
TO YOUR SPECIFICATIONS**

COMPLETED PROJECTS

COMPLETED PROJECTS FOR THE YEAR 2017				
Contractor / Owner	Date Started	Date Finished	Name of Project / Location	Scope of Works
Makati Development Corporation	1/0/1900	10/14/2017	SOUTH PARK ARVO BPO PROJECT -Old Nestle Road, Alabang Muntinlupa	Textured Painted Finish
TAGUSAO CONSTRUCTION	2/7/2017	3/27/2017	JOINT MARITIME LAW ENFORCEMENT TRAINING CENTER - MAGARWAK PUERTO PRINCESA PALAWAN	WATERPROOFING WORKS: GRANDFLEX 72
CLINTON ETON	2/16/2017	3/27/2017	SINGLE DETACH UNIT - ETON-68 CHINO ROCES AVE QUEZON CITY	Waterproofing: TA Membrane
JL BIGORNIA	3/16/2017	3/27/2017	DELOS SANTOS MEDICAL CENTER EXTENSION BUILDING 201 E RODRIGUEZ SR. AVE. QUEZON CITY	Epoxy Injection
CARLA CACALDA	3/16/2017	3/27/2017	Residential Building - 249 E Dela Paz St Angono Rizal	Epoxy Injection
PPD GREEN	3/18/2017	3/27/2017	ROBINSON PLACE MALOLOS-KM 41 MCARTHUR HI-WAY MALOLOS BULACAN	Epoxy Injection
EMPERADOR	2/22/2017	4/27/2017	SRBP BUILDING-#1 American Ave. Greenfield Autopark Sta. Rosa Laguna	Waterproofing: TA Membrane
STATE PROP CHATEU	2/23/2017	4/29/2017	VERSAILLES TOWNHOUSE - CHATEAU MANSION- DAANG HARI ROAD ALMANZA DOS LAS PINAS CITY	WATERPROOFING WORKS
CLINTON MAYNILAD	2/13/2017	6/23/2017	MAYNILAD WATER-Tondo Maynila	Waterproofing: TA Membrane
SUYEN BENCH	6/5/2017	6/23/2017	BENCH - VERTIS-VERTIS NORTH QUEZON CITY	SKIMCOAT SF WITH GRANDKOTE WBS52
GT GO MAHOGANY	6/30/2017	7/10/2017	Mahogany - Phase 2 #9 Mahogany St. South Forbes Park, Makati City	Grandflor EFC 100 Gray
STEDGRO	6/29/2017	7/19/2017	Production Area, Coffee Room & Clean Room-#4 Seville St. Virginia Summerville Subd. Mayamot Antipolo Rizal	Grandkote PU Coating
CONQUEROR	7/14/2017	8/14/2017	RUSTY LOPEZ MAIN BUILDING-88 E. RODRIGUEZ AVE. STO NINO MARIKINA CITY	REPAIR OF WALL CRACK & GRIDLINE & WATERPROOFING WORKS
KCD BUILDERS CORPORATION	7/17/2017	9/5/2017	ASSUMPTION HOSPITAL & MEDICAL CENTER-Sumulong Hwy, Antipolo, 1870 Rizal	Waterproofing: TA Membrane
MECEL MARIKINA	6/2/2017	9/30/2017	Ayala Mall - Homerun Liwasang Kalayaan Marikina Heights Marikina City	EIFS - Exterior Insulation and Finishing System
GN3NG ENTERPRISES	8/11/2017	10/7/2017	Eviang Building E. Evia Lifestyle Center Mall Daang Hari Las Pinas Cavite	Waterproofing: TA Membrane
GT GO ENTERPRISES INCORPORATED	10/13/2017	10/11/2017	TIMOTHY DY RESIDENCE-TIME STR COR 4TH AVE WEST TRIANGLE QUEZON CITY	Epoxy Injection
MGS BUILDING SOLUTIONS	5/18/2017	11/11/2017	LUMINA HOMES -Lumina Quezon Office, Unit 4 Crossroads Building Isabang Lucena City	Epoxy Injection
MGS BUILDING SOLUTIONS	1/0/1900	11/15/2017	LUMINA HOMES- Tanza, Cavite	Epoxy Injection
RCENINA TRADING	11/3/2017	11/15/2017	San Martin Subdivision San Isidro Angono Rizal	Waterproofing - Swimming Pool
GN3NG ENTERPRISES	8/7/2017	11/21/2017	EVAI BLDNG Evia Lifestyle Center Mall Daang Hari Road Las Pinas City	Waterproofing Works
XRC MALL	11/21/2017	12/11/2017	Xentro Mall - 37B. SUMULONG HIWAY BRGY MAMBUGAN ANTIPOLO CITY	WATERPROOFING FOR CISTERN AND STP
SUYEN BENCH	10/21/2017	12/19/2017	Bench Bonifacio HS - BGC 30TH ST. COR RIZAL DRIVE CRESENT PARK WEST 5 BGC TAGUIG CITY	REPAINTING OF EXISTING EIFS WALLS BENCH BLDG USING GRANDPRUF ACRYFLEX



**WE DON'T JUST MANUFACTURE
WE CAN PRODUCE ACCORDING
TO YOUR SPECIFICATIONS**

COMPLETED PROJECTS

COMPLETED PROJECTS FOR THE YEAR 2017

Contractor / Owner	Date Started	Date Finished	Name of Project / Location	Scope of Works
Discovery World Corporation	2016-06-23	2017-10-27	Discovery Villas - Boracay Island Malay Aklan	Grandflor PU HD & Pu Coating
Reyam Hardware	2016-03-22	2017-02-20	Shopking Commercial Bldg - Commonwealth Ave Quezon City	Cementitious Crystal Waterproofing
SB Construction	2016-07-28	2017-06-28	Pagbilao Power Plant - Pagbilao Quezon Province	Waterproofing: TA Membrane
Makati Development Corporation	2016-09-08	2017-01-31	Centrio H&M Project - Cagayan De Oro City	Waterproofing on Roofdeck
Kreativ Dev't Group Corporation	2016-12-10	2017-05-31	Yumang Residence - 1453 E. RODRIGUEZ SR AVE BRGY KRISTONG HARI QUEZON CITY	TEXTURED PAINT FINISHED

COMPLETED PROJECTS FOR THE YEAR 2016

Contractor / Owner	Date Started	Date Finished	Name of Project / Location	Scope of Works
AP Canlas Builders & Devt	12/7/2015	1/25/2016	Metro Antipolo Hospital and Medical Center- Antipolo City	Waterplugging & Waterproofing System
GT Go Enterprises	10/23/2015	1/30/2016	GSN BUILDING-TOMAS MORATO QUEZON CITY	Waterproofing : Grandflex 72
GT Go Enterprises	1/0/1900	8/26/2016	Mahogany Residence	Grandkote 6200
GRAND UNION SUPERMARKET	12/1/2015	1/8/2016	SOUTH SUPERMARKET-BRENTVILLE	Grandflor EFC 100 / Grandkote PU Coating
GRAND UNION SUPERMARKET	2/5/2016	2/15/2016	SOUTH SUPERMARKET-Lipa Branch	Waterproofing Works & Repainting
Leader Garments Corporation	3/16/2015	1/12/2016	Fibertex Compund, km26, Brgy Dolores, Taytay, Rizal	Repair and Application of Grand Epoprime
FS Phils Inc	1/4/2016	2/13/2016	SEMPHIL 4 - Batino Calamba Laguna	Waterproofing: TA Membrane
FS Phils Inc	1/0/1900	11/4/2016	FSPHIL (SEMPHIL- SCRAP AREA) -Batino Calamaba , Laguna	Waterproofing: TA Membrane
Vision Properties Development	1/25/2016	3/28/2016	GO Hotel Cubao - Aurora Blvd Cubao, Quezon City	Waterproofing: TA Membrane
Vision Properties Development	1/27/2016	4/20/2016	Go Hotel Paranaque - 608 Quirino Ave Baclaran Paranaque Manila	Waterproofing: TA Membrane
Dynamic Planners	2/26/2016	3/21/2016	El Construction Inc - Heart Village Amparo Caloocan City	Waterproofing : Grandflex 72
Makati Development Corp	4/14/2016	11/12/2016	Avida Centrio Tower - Brgy 24 Corrales Ave Cagayan De Oro	Grandflor Floorhard 35
Makati Development Corp	8/22/2016	9/22/2016	Solenad 3 Bldg D -Nuvali Sta Rosa Laguna	Waterproofing Works Concrete Trench
Progressive Laboratories	10/29/2016	11/26/2016	Dispensing, Warehouse & Oven Hall - 149 Dangay St Project 7 Quezon City	GRANDPRUF CWS 2 COATS GRANDPRUF ACRYFLEX
A&E EQUINET	6/28/2016	12/1/2016	National Coast Watch Substation - Dumaguete City	REPAIRS OF DAMAGED CONCRETE DECK SLAB



**WE DON'T JUST MANUFACTURE
WE CAN PRODUCE ACCORDING
TO YOUR SPECIFICATIONS**

COMPLETED PROJECTS

COMPLETED PROJECTS FOR THE YEAR 2016

Contractor / Owner	Date Started	Date Finished	Name of Project / Location	Scope of Works
PPD GREEN	3/15/2016	7/30/2016	Isuzu Showroom - Otis Pandacan Manila	GRANDFLOR SL2/ EFC
La Union Skymall	12/9/2015	6/27/2016	Manna Mall - San Fernando La Union	GRANDFLEX 50/ GRANDPRUF ACRYSEAL
GN3NG ENTERPRISE	5/27/2015	2/29/2016	Evia Bldg C - Daang Hari Road, Las Pinas City	GRANDPLUG 1/ GRANDPRUF CM
MECEL CONSTRUCTION	7/23/2015	6/30/2016	Liberty Center Mall Bldg 1 - Quezon Ave cor Rizal St Legaspi Albay	Textured Finished Coating
INTELLIGENT - BELO	1/16/2016	4/28/2016	Belo Medical Center Building - 49 Connecticut St Greenhills San Juan Metor Manila	Waterproofing: TA Membrane
GOLDPEAK - NAIA EXPRESSWAY	8/17/2016	8/23/2016	NAIA Expressway - Paranaque City	EPOGROUT IJ/UW
DYNAMIC PLANNERS-ABELLA	9/2/2016	9/12/2016	Mike Abella Residence - Basement Retaining Wall - Industrial Valley Subd Marikina City	GRANDPLUG 1/ GRANDPRUF CM
GT GO - TIMOTHY DY	9/17/2016	11/24/2016	Timonthy Dy Residence - 35A Times St cor West Triangle Quezon City	GRANDKOTE PU
GT GO - GEORGE YOUNG	10/14/2016	11/21/2016	George Young Mahogany Homes - Forbes Park Makati City	Waterproofing : Grandflex 72
ORIENT SEMICON	4/12/2016	7/11/2016	Orient Semiconductor - Lspii Brgy La Mesa Calamba Laguna	Waterproofing: TA Membrane & Grandseal 3210
GT GO - LAWRENCE TY	3/12/2016	5/10/2016	Lawrence Ty Residence - Tandang Sora Quezon City	Waterproofing : Grandflex 72
GT GO - SHIELA (TIMOTHY) DY	6/10/2016	6/20/2016	Timonthy Dy Residence - 35A Times St cor West Triangle Quezon City	PU COATING
BELO MEDICAL GROUP	6/16/2016	4/16/2016	Belo Medical Center Bldg - Alabang Center Muntinlupa	EPOGROUT/ GRANDFLEX50

COMPLETED PROJECTS FOR THE YEAR 2015

Contractor / Owner	Date Started	Date Finished	Name of Project / Location	Scope of Works
GRAND UNION SUPERMARKET	5/3/2015	5/27/2015	SOUTH SUPERMARKET MARIKINA	Waterproofing & Apply of Grand EpogROUT IJ / Grand PU Coating
GRAND UNION SUPERMARKET	5/3/2015	5/27/2015	SOUTH SUPERMARKET Valenzuela	Grandflor PU Mortar
GRAND UNION SUPERMARKET	4/1/2015	4/13/2015	SOUTH SUPERMARKET - Los Banos	Grandflor PU Mortar / PU Coating
GRAND UNION SUPERMARKET	10/30/2015	11/27/2015	SOUTH SUPERMARKET - Filinvest	Waterproofing & Apply of Grand EpogROUT IJ / Grand PU Coating
GRAND UNION SUPERMARKET	10/1/2015	10/12/2015	SOUTH SUPERMARKET - Lipa Batangas	Grandkote 6200
G.T Go Enterprises	2/11/2015	4/17/2015	Mike Balani Residence - Bel Air Makati City	Waterproofing Works
Roxanne Sebastian	5/3/2015	6/5/2015	Commercial Building - #1 Matisin Cor Herbosa St Tondo Manila	Waterproofing Works
MS. KATHLEEN SYLATO	3/15/2015	3/19/2015	SYLATO RESIDENCE-#71 Castrillo Street, Corinthian Gardens, Quezon City	Waterproofing : Grandflex 72
Mr & Mrs Samuel Madduma	2/24/2015	4/16/2015	Residential Building - 507 Extramadura St Sampaloc Manila	Waterproofing : Grandflex 72
Ms Ann Robles- Figueroa	2/23/2015	3/20/2015	Robles - Figueroa Residence - 50 Odysseus St Acropolis Grems Subd Quezon City	Waterproofing Works



**WE DON'T JUST MANUFACTURE
WE CAN PRODUCE ACCORDING
TO YOUR SPECIFICATIONS**

COMPLETED PROJECTS

COMPLETED PROJECTS FOR THE YEAR 2015

Contractor / Owner	Date Started	Date Finished	Name of Project / Location	Scope of Works
Bayantel Telecommunications Inc	7/27/2015	9/14/2015	Roosevelt - 4F Roosevelt Operations Center-234 Roosevelt Ave. SFDQ Q.C.	Repair of Grouts & Application of Grandflex 72
Bayantel Telecommunications Inc	3/15/2015	5/27/2015	4F Roosevelt Operations Center-234 Roosevelt Ave. SFDQ Q.C.	Waterproofing Works
Fastem Construction Inc	5/23/2015	9/14/2015	Hysonic Phils-LISP II Sto Tomas Batangas	Waterproofing: TA Membrane
Gn3ng Enterprises	2/11/2015	3/17/2015	Potena Evia Bldg B - Daang Hari Muntinlupa	Waterproofing of Retaining Wall
DCMS Trading c/o Scaborough	1/16/2015	2/11/2015	STI Malolos - Malolos Bulacan	Waterproofing Works
Dahn Berger Phils	3/28/2015	7/3/2015	SM Molino - Molina Cavite	Waterproofing Works
St Roche Construction	10/22/2014	2/16/2015	Collegio De San Agustin	Waterproofing Works : Grandflex 72
Toplite Lumber Inc	9/16/2014	1/19/2015	Residential House- #71 Sapang Bakaw Lawang Bato Valenzuela City	Waterproofing Works : Grandflex 72 & PU Coating
FS Phils Inc	9/17/2014	5/11/2015	SM200 Phase 1 Project - Sarangani Province	Waterproofing: TA Membrane
Dahn Berger Phils	11/25/2014	3/20/2015	SM Taytay - Manila East Road, Taytay Rizal	Waterproofing Works
State Properties Corp	11/18/2014	2/1/2015	State Center Building I - Juan Luna St Binondo Manila	Waterproofing: TA Membrane
State Properties Corp	12/5/2014	2/28/2015	Sophie Model - Blk 17 Lot 16 Versailles, Las Pinas City	Waterproofing Works : Grandflex 72
State Properties Corp	5/13/2015	9/30/2015	Irene Model - Blk 14 Lot 18 Versailles, Las Pinas City	Waterproofing Works : Grandflex 72
Dream Phils Const Co Inc	8/14/2014	10/3/2015	Tower Mall - Trece Matirez Cavite	Waterproofing Works in Roofdeck / Cistern Tank/ Parapet Wall / Concrete Gutter
State Properties Corp	6/15/2015	6/30/2015	Chang Kai Shek College-Binondo Manila	Sealing of Wall & Floor Joints
Aeonprime Land Development Corporation	6/25/2015	7/28/2015	Aeon Tower-Alabang Muntinlupa	Sealing of Wall & Floor Joints
DCMS Planners	5/27/2015	7/16/2015	P Burgos Elementary School-Buenos Aires St. sampaloc Manila	Waterproofing Works : Grandflex 72
Bayantel Communications Inc	5/8/2015	7/7/2015	Corporate Center Building - Maginhawa cor Malingap St Teachers Village Quezon City	Grandflex 50 (3coats)
GT Go Enterprises	5/20/2015	6/30/2015	Azalea Hotel & Resort - Brgy. Balabag Malay Aklan	Textured Finish Coating
Lorigen Trading Services Inc	5/22/2015	6/30/2015	Ann Arbor-BF Homes, Paranaque City	Grandkote PU Coating
DHY Realty and Development	5/30/2015	6/29/2015	Pasig Warehouse - Eusebio Avenue, Pasig City	Grandflor Florhard 35
AP Canlas Builders & Devt	6/11/2015	11/18/2015	Metro Antipolo Hospital and Medical Center-Antipolo City	Waterproofing : Grandflex 72
MBS Paseo Realty Devt Inc	8/21/2015	8/29/2015	GSN BUILDING-TOMAS MORATO QUEZON CITY	Waterproofing: TA Membrane
CREATIVE DESIGN GROUP	4/22/2015	11/2/2015	TANYA GARCIA RESIDENCE-#61 Swallow Drive Green Meadows , Libis QC	Grandfix Stucco
SY LS Development Corporation	5/15/2015	8/6/2015	Antigua Building - Quezon Ave cor CT Profugo St Lucena City	Flexicrete & Grandflex 50
Gabzion Enterprises	7/25/2015	8/3/2015	Antigua Building - Quezon Ave cor CT Profugo St Lucena City	Waterproofing for Waterplug in Roofdeck
AKH Construction	7/24/2015	8/26/2015	NAIA EXPRESSWAY PHASE II - Pasay City	Grand EpogROUT II
DBS Construction Inc	9/15/2015	10/13/2015	Gentec Col Storage - Manggahan Light Industrial Park Pasig City	Grand EpogROUT II
Custodio, Cruz, Puno Law Office	9/9/2015	10/2/2015	Custodio, Cruz, Puno Law Office - 11F Point Bldg Ortigas Pasig City	Waterproofin Works in Condesing Unit & T&B
A-Con Construction	11/10/2015	12/18/2015	Rustan Supermarket - Sampaloc Manila	Grandflor PU Mortar
Fibertex Corporation	9/2/2015	10/28/2015	Selecta Warehouse - KM 26 Brgy Dolores Taytay Rizal	Grandgrout 8000 & Grandflor Leveller



**WE DON'T JUST MANUFACTURE
WE CAN PRODUCE ACCORDING
TO YOUR SPECIFICATIONS**

COMPLETED PROJECTS

COMPLETED PROJECTS FOR THE YEAR 2014			
Contractor / Owner	Date Finished	Name of Project / Location	Scope of Works
DRA. GEEJAY ORDINAL	6/30/2014	ORDINAL RESIDENCE	Waterproofing: Grandpruf CM & Grandflex 72
SHELL TERCON PHIL. BUILDERS INC.	3/3/2014	NATURE SPRING WAREHOUSE – Sta Rita Bulacan	Flooring Works – Grandkote EPS + Grandflor EFC
OUR LADY OF PILLAR HOSPITAL	3/21/2014	OUR LADY OF PILLAR HOSPITAL – Imus Cavite	Waterproofing
MR. ALEX YU	3/12/2014	UNIT 4 SIMOUN APARTMENT – Quezon City	Waterproofing of Firewall
ENGR. ED DE SILVA	3/13/2014	DE SILVA RESIDENCE – Veintereales Valenzuela City	Waterproofing – Grandflex 72
DBS CONSTRUCTION	3/13/2014	ERLINDA AGILON RESIDENCE – Veintereales Valenzuela City	Waterproofing – Grandflex 72
AMON MARKETING	9/25/2014	ANN PASTRANA RESIDENCE – Bldg. 2 Ayala Alabang	Waterproofing – Grandflex 72
PC FRAME CONSTRUCTION	4/2/2014	BRIDGES MAINTAINANCE / REPAIR – Olongapo City	Concrete Repair Works / Waterproofing
CABLAM CONSTRUCTION	3/6/2014	REY SINGSON RESIDENCE – San Juan Metro Manila	T & B Waterproofing : Grandflex 72
MDI GROUP HOLDINGS, INC	7/5/2014	MDI BUILDING – Taguig City	Baseplates
J.A. AVILES + ASSOCIATES	4/18/2014	SOUTH SUPERMARKET – Malolos Bulacan	Grandflor PU Mortar
DAHN BERGER PHILS.	3/27/2014	LIFT STATION TANK	CMWaterproofing: Grandpruf CM
GT GO ENTERPRISES INCORPORATED	5/3/2014	FRANCISCO TAN RESIDENCE – Flamingo St. Green Meadows Quezon City	Roof Deck – Waterproofing : Grandflex 72
AKH CONSTRUCTION	10/10/2014	DIOKNO EDSA TAFT ROAD – Pasay City	Grand EpogROUT II/UW
AMON MARKETING	6/1/2014	RUFINO PLAZA – Ayala Ave. Makati City	Roof Deck – Grandflex 50 + Mortar 107 + Acryflex
A.P. CANLAS BUILDERS &	5/15/2014	METRO ANTIPOLLO HOSPITAL & MEDICAL CENTER INC. – Marcos Hiway Brgy. Mayamot, Antipolo City	Retaining Wall – Waterproofing:Grandpruf CM
BDO	4/20/2014	BDO DRIVEWAY – Shaw Pasig City	Grandpatch 203
SANRHO BUILDERS	5/10/2014	Coast Guard Central Luzon	Roof Deck Slab – Concrete Repair by Epoxy Injection
VILLA JHOANA RESORT	6/15/2014	VILLA JHOANA RESORT – Angono, Rizal	Waterproofing:Grandflex 72
STATE PROPERTIES CORP.	6/27/2014	SOPHIE MODEL – Blk.16 Lot 17 Versailles Las Piñas City	Waterproofing : Grandflex 72 + Grandfix Mortar 107
I CONTRACTORS & DEV'T. INC.	6/26/2014	COLEGIO DE SAN AGUSTIN – San Jose Del Monte Bulacan	Waterproofing of T&B & Church Dome
DR. NEIL DE LUMEN	7/25/2014	FAIRMOUNT HILLS – Antipolo City	Basement Wall – Positive Side : Waterproofing
DR. NEIL DE LUMEN	12/5/2014	FAIRMOUNT HILLS – Antipolo City	Additional Work – T&B Balcony ; Grandflex 72
STATE PROPERTIES CORP.	6/30/2014	STATE CORPORATE CENTER BUILDING – Binondo Manila	Rewaterproofing of Roof Deck
BUDGET LANE	8/11/2014	BUDGET LANE - Angono, Rizal	TFC Coating
MAGNA PRIME CHEM. TECH. INC.	7/19/2014	LIGHTNING AUTOSHOP – Luna Mencias St. Mandaluyong City	Exterior Wall – Grandflex 50 + Grandpruf Acryflex
I CONTRACTORS & DEV'T. INC.	8/9/2014	COLEGIO DE SAN AGUSTIN – San Jose Del Monte Bulacan	Epoxy Injection – Grand EpogROUT II/UW



**WE DON'T JUST MANUFACTURE
WE CAN PRODUCE ACCORDING
TO YOUR SPECIFICATIONS**

COMPLETED PROJECTS

COMPLETED PROJECTS FOR THE YEAR 2014			
Contractor / Owner	Date Finished	Name of Project / Location	Scope of Works
GN3NG ENTERPRISES	9/30/2014	PONTEVIA VISTA EVIA – Bldg. B Daang Hari, Muntinlupa City	Waterproofing & Floor Coating Works
FAREAL BUILDERS	6/13/2014	SAN MIGUEL BUILDING – Ortigas Pasig City	Waterproofing ; TA Membrane
FIBERTEX CORPORATION	7/9/2014	STRATEGIC WAREHOUSE – Km. 26 Brgy. Dolores, Taytay, Rizal	Flooring Repair – Grandflor Leveller OL
BAYAN TELECOMMUNICATION INC.	9/25/2014	ROOF DECK – Fairview	Waterproofing ; TA Membrane
ENGR. CESAR LIMPAHAN JR.	7/22/2014	ACC BUILDING – Guadalupe Makati City	Roof Deck - Waterproofing; TA Membrane
BAYAN TELECOMMUNICATION INC.	9/10/2014	VALENZUELA NODE – McArthur Hiway Valenzuela City	Roof Deck - Waterproofing; TA Membrane
DAHN BERGER PHILS.	7/23/2014	MC DONALDS CANDELARIA BRANCH – Candelaria Quezon	Cistern tank - Waterproofing ; TA Membrane
SOUTH SUPERMARKET	7/23/2014	SOUTH SUPERMARKET – Lipa Batangas	Concrete Repair works
DYNAMIC PLANNERS	8/8/2014	FEU HOSPITAL – Fairview Quezon City	Trench Canal and T&B - Waterproofing
FLORIDABLANCA CONSTRUCTION & DEV'T. CORP.	8/18/2014	UNIVERSITY OF THE EAST – Recto Manila	Patient's Waiting Area – Epoxy Floor Coating
STI	8/30/2014	STI – Malolos Bulacan	Elevator Shaft Repair – Grandpruf CM
ARCH. WILLY APACIBLE	9/1/2014	AVIDA TOWERS – San Lazaro Manila	Unit 17-0, Tower 4 – Grandflex 72
JOHN JOHN BALLARET	10/5/2014	RESIDENCIA DE REGINA – Xavierville Quezon City	Waterproofing ; Grandflex 50 + Acryflex + Fiberglass Mesh
PPLM INDUSTRIAL CORP.	9/19/2014	PETRON – Limay Bataan	Waterproofing – 3mm Sanded TA Membrane
BSC REALTY INC.	11/15/2014	NORDSTRUM BLDG. – Malakas Cor. Matapang St. Quezon City	Waterproofing ; 3 coats Grandflex 72 + 2 coats Granpruf CM
TOPWORKS REALTY CORP.	9/20/2014	BUILDNET OFFICE – EDSA Mandaluyong City	Concrete Repair – Grand EpogROUT II/UW
POWER ONE CONSTRUCTION	10/2/2014	48 MIXED BUILDING – Panay Ave. Quezon City	Grandpruf CM
OUR LADY OF PILLAR HOSPITAL	10/10/2014	OUR LADY OF PILLAR HOSPITAL – Imus Cavite	Exterior Wall (rt. Side Annex Bldg.)
AKH CONSTRUCTION	10/10/2014	V. MAPA STA MESA	Grandpatch 203
MR. ALEX YU	11/26/2014	ALEX YU RESIDENCE – Quezon City	Unit 1 - Grandflex 72 + Mortar 107
JAZV BUILDERS	10/20/2014	HFS OFFICE – Salcedo Vill. Makati City	Grandpruf TA Membrane
SANDS OS TRIBOA RESORTS AND SPA	11/13/2014	ACEA RESORTS – San Bernardino Rd. Subic Port District Subic Bay Freeport Zone	Grandpruf CM
EXCELL CONTRACTORS INC.	11/7/2014	THE PRESS CLUB – Greenbelt Drive Makati City	Grandflex 72
VISION PROPERTIES	11/5/2014	PUREGOLD ESPANA – M. Dela Fuente St. España Manila	Grandflor EFC 100 Non - Skid
GT GO ENTERPRISES INC.	12/9/2014	DR. TIMOTHY DY RESIDENCE – West Triangle Quezon City	Waterproofing
SOUTH SUPERMARKET	11/15/2014	SOUTH SUPERMARKET – Pasig Branch	Grandflor PU Mortar + Grandkote PU Coating
MAGNA PRIME CHEMICAL TECHNOLOGY INC.	12/2/2014	LIGHTNING AUTOSHOP – Luna Mencias St. Mandaluyong City	Concrete Gutter – Grandflex 50
REYAM HARDWARE & GENERAL MERCHANDISE	12/31/2014	FAMILY DOCTORS GENERAL HOSPITAL – San Carlos Dagupan	Grandpruf CM + ETL w/ fiberglass chopped strands



**WE DON'T JUST MANUFACTURE
WE CAN PRODUCE ACCORDING
TO YOUR SPECIFICATIONS**

COMPLETED PROJECTS

COMPLETED PROJECTS FOR THE YEAR 2013

Contractor / Owner	Date Finished	Name of Project / Location	Scope of Works
EJE INDUSTRIAL BUILDERS & DEVELOPERS	12/24/2013	AMKOR AHU ROOM – Parañaque City	Grandkote PU Coating
DUNAMIS CONSTRUCTION	12/16/2013	COMELEC BLDG. – Intramuros Manila	Waterproofing
F.S. PHIL. CORPORATION	12/16/2013	PETRON 4, 16 BUILDING PROJECT – Limay Bataan	Concrete Repair
FIRST BALFOUR	12/12/2013	RMP 2 PACKAGE G – Limay Bataan	Waterproofing
MIGHTY CORPORATION	12/10/2013	RESIDENTIAL HOUSE GARAGE – Makati City	Flooring Works
MIGHTY CORPORATION	12/9/2013	RESIDENTIAL HOUSE GARAGE – Makati City	Roof Deck – Flooring Works
SHERWIN SY	06/12//2013	SHERWIN SY RESIDENCE – Parañaque City	Waterproofing / Concrete Repairs
CONCEPT HOMES DESIGN	12/4/2013	FRANCIS ORTEGA RESIDENCE – Alabang, Muntinlupa City	Waterproofing
MR. ALEX YU	11/26/2013	ALEX YU RESIDENCE – Simon St. Quezon City	Waterproofing
MDC - AVIDA	11/22/2013	MDC VALUE MALL – Molino, Cavite	Concrete Repairs
STATE PROPERTIES CORPORATION	11/20/2013	MANDARIN EVANGELICAL CHURCH – Binondo Manila	Waterproofing
VISION PROPERTIES DEVELOPMENT CORP.	11/16/2013	PUREGOLD CAVITE – General Trias Cavite	Flooring Works
SB CONSTRUCTION	11/7/2013	PETRON RMP 2 – Limay, Bataan	Waterproofing
J.A. AVILES + ASSOCIATES	11/7/2013	SOUTH SUPERMARKET – Filinvest Alabang, Muntinlupa City	Grandflor PU Mortar
D.L. CERVANTES CONSTRUCTION INC.	10/12/2013	UNIHEALTH VALENZUELA HOSPITAL – Valenzuela City	Waterproofing & Tank lining
GN3NG ENTERPRISES	10/11/2013	EVIA GLOBAL BUILDING B – Daang Hari Las Piñas City	Waterproofing
GN3NG ENTERPRISES	9/25/2013	PONTEVIA BLDG. A - Daang Hari Las Piñas City	Waterproofing
LA UNION SKY MALL	17/09//2013	MANNA MALL – San Fernando La Union	Roof Deck ACCU – Concrete Gutter / Waterproofing
DAHN BERGER PHILS.	9/11/2013	SM SAVEMORE – Cainta, Rizal	Roof Deck Slab - Waterproofing
Mr. Jose Co – SILVERGATE REALTY & DEV'T. CORP.	9/4/2013	EAST SUMMIT RESIDENCE – Brookside Cainta Rizal	Bldg. 3&4 Roof Deck - Waterproofing
ENGR. CESAR LIMPAHAN	8/9/2013	ALPHALAND – Magallanes, Pasay City	PU Sealant & Grandpruf TA Membrane
R.G. SIMBULAN & PARTNERS	8/8/2013	Makati CitySHANGRILA HOTEL –	AHU Room
WHITEMOON INC.	8/3/2013	TRADEHALL STARMALL – EDSA Shaw Blvd. Mandaluyong City	Flooring Works – Grandflor EFC
REYAM HARDWARE & GENERAL MERCHANDISE	7/27/2013	SINAGTALA VILLAGE – Parañaque City	Waterproofing : Grandflex 72 + Grandplug 1
A.P. CANLAS CONSTRUCTION & DEV'T. CORP.	7/26/2013	GENTRI MEDICAL CENTER & HOSPITAL – Gen. Trias, Cavite	Grandpruf CM + ETL 100
STA. CLARA INTERNATIONAL CORP.	7/22/2013	SUB STA A & 21 – Limay Bataan	RIB Building
HENRO CONSTRUCTION	7/9/2013	SEAPAC PHILS. – Taguig City	Roof Deck - Waterproofing
A.P. CANLAS CONSTRUCTION & DEV'T. CORP.	7/8/2013	ROMBLON PROVINCIAL HOSPITAL – Romblon Panay Island	Waterproofing : Grandflex 72



**WE DON'T JUST MANUFACTURE
WE CAN PRODUCE ACCORDING
TO YOUR SPECIFICATIONS**

COMPLETED PROJECTS

COMPLETED PROJECTS FOR THE YEAR 2013

Contractor / Owner	Date Finished	Name of Project / Location	Scope of Works
R.G. SIMBULAN & PARTNERS	05/07//2013	SHANGRILA MALL – Makati City	T&B, Kitchen & Bar Counter
LOPZCOM REALTY CORP.	6/29/2013	GEORGE TOWN CONDO – Valenzuela City	Waterproofing – Cistern Tank
LA UNION SKY MALL CORP.	6/20/2013	MANNA MALL – San Fernando La Union	Grandpruf CM + Tank lining ; Grandpruf CWS, Grandpruf TA Membrane
DAHN BERGER PHILS.	6/15/2013	SAVEMORE PILI BRANCH – Camarines Sur	Grandpruf TA Membrane 3mm, 4mm
Mr. Jose Co – SILVERGATE REALTY & DEV'T. CORP.	5/3/2013	EAST SUMMIT RESIDENCE BLDG. 3 & 4 – Cainta Rizal	Elevator PIT / Cistern Tank
SB CONSTRUCTION	5/3/2013	RMP 2 – Limay Bataan	Grandpruf TA Membrane 3mm Sanded
R.G.G. ENTERPRISE	5/2/2013	WENDY'S STORE – SM Sta. Mesa	Grandpruf TA Membrane
F.S. PHIL. CORPORATION	4/27/2013	DONGWANG CLUBHOUSE – Clark Pampanga	Grandpruf CWS
A.P. CANLAS CONSTRUCTION	4/26/2013	GENTRI DOCTORS – Gen. Trias Cavite	Cistern Tank
MEGAWORLD CORPORATION	4/8/2013	TECHNO PLAZA 2, EASTWOOD – Libis Quezon City	Grand EpogROUT II/UW
WILCON BUILDERS	4/6/2013	WILCON DEPOT – Pasig City	Flooring Works
DAHN BERGER PHILS.	4/4/2013	SM SAVEMORE – Cainta, Rizal	Waterproofing : Grandpruf CM Tank Lining
ANTEL LAND HOLDINGS INC.	4/2/2013	ANTEL SPA RESIDENCES – Makati City	Grandpatch 203
SEAPINE CONSTRUCTION	3/29/2013	RMP 2 PETRON – Limay, Bataan	Grandpruf TA Membrane 3mm Slated
GYROTECH CONSTRUCTION CORP.	3/27/2013	PUREGOLD NOVALICHES, – Novaliches Quezon City	Grandflor EPX SL
NATHANAEL JOHN BUILDERS & DEV'T. CORP.	3/26/2013	BLDG. A PONTEVIA VISTA EVIA – Daang Hari Muntinlupa City	Waterproofing : Grandpruf CM – Tank Lining : Torch Membrane
TABS ENTERPRISE	3/23/2013	ALASKA POWERHOUSE - Laguna	Grandflor PU Mortar
MEGAWORLD CORPORATION	3/11/2013	RICHMONDE HOTEL – Libis, Quezon City	5th to 26th Floor – Sealing of Window & Joints
R.G. SIMBULAN & PARTNERS	3/6/2013	NEW WORLD HOTEL – Makati City	Phase 1 B Pantry Area
F.S. PHIL. CORPORATION	3/5/2013	PETRON – Limay Bataan	Waterproofing, Membrane Sanded
MR. URSUA	2/17/2013	URSUA RESIDENCE – Nabatat, Pangasinan	Waterproofing
FLORIDABLANCA CONSTRUCTION & DEV'T CORP.	2/13/2013	PUREGOLD – Calamba, Laguna	Flooring – Grandflor EPX SL4 + EFC
F.S. PHIL. CORPORATION	1/31/2013	DONGWANG CLUBHOUSE – Clark Pampanga	Exterior Wall – Grandpruf CWS
MEGAWOLRD CORP.	1/25/2013	RICHMONDE PARK HOTEL, – Libis Quezon City	Additional Works
FORMTECH BUILDERS CORP.	1/25/2013	CANON BASE MACHINE – Sto. Tomas Batangas	Flooring - Grandflor Leveller 10
WELCOME BUILDERS	1/15/2013	SAN LORENZO HOSPITAL – Sta. Cruz Manila	Flooring Works – Grandflor EPS
MEGAWORLD CORP.	1/8/2013	RICHMONDE PARK HOTEL, – Libis Quezon City	5th to 28th Floor
Mr. Jose Co – SILVERGATE REALTY & DEV'T. CORP.	1/8/2013	EAST SUMMIT RESIDENCES – Brookside Cainta, Rizal	Waterproofing - Bldg. 3 & 4 Toilet & Bath



**WE DON'T JUST MANUFACTURE
WE CAN PRODUCE ACCORDING
TO YOUR SPECIFICATIONS**

COMPLETED PROJECTS

COMPLETED PROJECTS FOR THE YEAR 2012

Contractor / Owner	Date Finished	Name of Project / Location	Scope of Works
FLORIDABLANCA CONSTRUCTION & DEV'T CORP.	12/21/2012	PUREGOLD – Calamba, Laguna	Grandflor EPX SL4 + EFC2nd P.O. – 2659 Flooring –
FLORIDABLANCA CONSTRUCTION & DEV'T CORP.	12/20/2012	PUREGOLD – Calamba, Laguna	1st P.O. – 2430 - Flooring
GYROTECH CONSTRUCTION CORP.	11/8/2012	PUREGOLD – San Pablo guna	Flooring Works – Grandflor NM, Self Levelling
MS. LIEZEL PAJA	11/2/2012	LIEZEL PAJA RESIDENCE – J.P. Rizal Ave. Reposo St. Makati City	Grandpruf PU Coating
KALIMERA INC.	11/2/2012	KALIMERA BUILDING - J.P. Rizal Ave. Reposo St. Makati City	Epoxy Injection
ANNA MARIE KOMATSUZAKI	10/8/2012	AMJC BUILDING – Taytay, Rizal	Exterior Wall - Waterproofing
J.A. AVILES + ASSOCIATES	9/12/2012	SOUTH SUPERMARKET – Bayang Luma Imus, Cavite	Industrial Flooring Works – Grandflor AS50
DERM CLINIC	9/10/2012	DERM CLINIC – 5/F SM Megamall Bldg. A	Grandpruf TA Membrane
ELECTRICAL EQUIPMENT & SYSTEM INTEGRATION	9/10/2012	MANILA WATER – Payatas, Quezon City	Waterproofing of Pipe Sleeves
STATE PROPERTIES CORP.	8/18/2012	STATE PROPERTIES CORP. – Daang Hari, Las Piñas City	Concrete Repair of Swimming Pool Area
CLINTON BUILDERS	8/15/2012	LA MESA DAM – Fairview, Quezon City	Waterproofing – Grandpruf TA Membrane
R.G. SIMBULAN & PARTNERS CORP.	8/3/2012	NEW WORLD HOTEL – Makati City	Flooring Works – Grandflor NM, Self Levelling
DELTA CONCRETE CORP.	7/29/2012	LA FARGE CEMENT PLANT, – Bangiad Taytay, Rizal	Epoxy Injection
AMON MARKETING	7/27/2012	REMY GENER RESIDENCE – Filinvest Cainta, Rizal	Waterproofing
MEGAWORLD CORPORATION	7/21/2012	ONE CENTRAL PARK – Eastwood Libis, Quezon City	Waterproofing TA Membrane
MVGI BUILDING	7/21/2012	MVGI BLDG. – Congressional Ave. Quezon City	Waterproofing
MR. TOM TRINIDAD	6/30/2012	TCT WAREHOUSE / RESIDENCE – Calamba Laguna	Waterproofing
MEGAWORLD CORPORATION	6/29/2012	RICHMONDE HOTEL – Eastwood Libis, Quezon City	Cooling Tower - Waterproofing
R.G. SIMBULAN & PARTNERS CORP.	6/28/2012	NEW WORLD HOTEL – Makati City	Ball Room & Kitchen Area- Waterproofing Grandpruf TA Membrane
HEPTA J BUILDERS	6/6/2012	MARITIME SPORTS COMPLEX – Malate, Manila	Waterproofing – Cistern Tank
MARCBUILT CONSTRUCTION	6/2/2012	MANUEL TAN RESIDENCE – Ayala Alabang	Waterproofing



**WE DON'T JUST MANUFACTURE
WE CAN PRODUCE ACCORDING
TO YOUR SPECIFICATIONS**

COMPLETED PROJECTS

COMPLETED PROJECTS FOR THE YEAR 2012

Contractor / Owner	Date Finished	Name of Project / Location	Scope of Works
LANDGROUP INC.	6/2/2012	THE AVENUE – Sta. Quiteria St. Quezon City	Waterproofing of T&B and Roof Deck
J.A. AVILES + ASSOCIATES	5/19/2012	SOUTH SUPERMARKET – Bayang Luma, Imus Cavite	Grandkote PU Coating & AS50 on Sidewalk
ASIA MEDIC FAMILY HOSPITAL & MEDICAL CENTER	4/4/2012	ASIA MEDIC FAMILY HOSPITAL & MEDICAL CENTER – Old Palapala Rd. Sampaloc 1 Dasmariñas Cavite	Repainting Works
Mr. Jose Co – SILVERGATE REALTY & DEV'T. CORP.	4/3/2012	EAST SUMMIT RESIDENCES – Brookside Hills Cainta, Rizal	Waterproofing of T&B – Grandpruf Slurry BB
ALPHALAND DEV'T. INC.	3/19/2012	BALESIN ISLAND RESORT – Quezon Province	CM, Grandkote 6200Waterproofing, Tank Lining of Cistern Tank – Grandpruf CWS, Grandpruf
VICMA MARKETING INC.	3/8/2012	SY WAREHOUSE – Parañaque City	Concrete Repair, Epoxy Injection, Rendering Mortars & Repainting
DBS CONSTRUCTION INC.	2/22/2012	CENTRAL MALL – Dasmariñas Cavite	Waterproofing of Roof Deck – Grandpruf TA Membrane 3mm Sanded
R.G. SIMBULAN & PARTNERS CORP.	1/26/2012	UCC COFFEE BLDG. – BGC, The Fort Taguig City	Waterproofing of Roof Deck – Grandpruf TA Membrane 3mm Slated
MEGAWORLD CORPORATION	1/16/2012	RICHMONDE HOTEL – Eastwood Libis Quezon City	Sealing, Painting and Waterproofing
HEDRON CONSTRUCTION	1/11/2012	TOSHIBA BLDG. – Cabuyao, Laguna	Supply of Tech Supervision and Material Supply – Grand Leveler 10
R.G. SIMBULAN & PARTNERS	11/11/2012	NEW WORLD HOTEL – Makati City	3rd Floor Slab – Epoxy injection
F.S. PHIL. CORPORATION	10/30/2012	OPTIS – GATEWAY BUSINESS PARK – General Trias Cavite	Flooring – Grandflor Leveller 10
STATE PROPERTIES CORP.	10/12/2012	POST UNDER PLANT VASES – Versailles Las Piñas City	Waterproofing
TOM TRINIDAD	8/31/2012	MTE WAREHOUSE CARMERY II – Calamba Laguna	Deck Waterproofing – Grandflex 72

COMPLETED PROJECTS FOR THE YEAR 2011

Contractor / Owner	Date Finished	Name of Project / Location	Scope of Works
F.S. PHIL CORPORATION	12/10/2011	PETRON REFINERY – Limay Bataan	Grandpruf TA Membrane 3mm Slated
STATE PROPERTIES CORP.	12/6/2011	SOPHIE MODELS – Tindig na Mangga, Daang Hari Rd. Almanza II, Las Piñas City	Blk.16 Lot 6 Ph. 1b, Blk. 7 Lot 8 Ph. 1a Waterproofing – Grandfix Basecoat
MR. JOEL MORONA	12/3/2011	PILA-PILA CHURCH – Pila- Pila Binangonan, Rizal	Deck & Balcony Waterproofing – Grandpruf CWS
LSBD CONSTRUCTION & MANAGEMENT CORP.	11/12/2011	SM SAVEMORE – Paco, Manila	Waterproofing of Cistern Tank
ALPHALAND DEV'T. INC.	11/4/2011	ALPHALAND MANILA HANGER NAIA – Pasay City	Waterproofing - Grandpruf – Grandfix Basecoat
ALPHALAND DEV'T. INC.	1/14/2011	ALPHALAND SOUTHGATE TOWER – Chino Roces Ave. Ext. Makati City	Application of EpogROUT II, Epoxy Injection Resin at Under Slab and Beams
CNQC QINGJIAN GROUP CO. LTD. – Mr. Johnny Zhang	4/1/2011	CNQC QINGJIAN GROUP CO. LTD – Quirino Highway, Novaliches Quezon City	Repair Works
CRYOMAINTE MAINTENANCE & CONSTRUCTION SERVICES	9/26/2011	APM & SMD BLDG. – Amkor Laguna	Waterproofing
DBS CONSTRUCTION INC.	7/8/2011	LESLIE SUPER STRUCTURE – Canlubang, Laguna	Waterproofing of Roof Deck, T&B and Cistern Tank
EJE INDUSTRIAL BUILDERS & DEVELOPERS	9/17/2011	AMKOR – Sucat Parañaque City	Floor Coating
KEYRIN ELECTRONICS	9/11/2011	SINGULARITY INC. – Rosario Cavite	Epoxy Floor Coating
G.T. GO ENTERPRISES	9/5/2011	COCA- COLA PLANT – Sta. Rosa Laguna	Concrete Repair Works
FMCP PRIME PROPERTIES INC. – Mr. Feliciano Yao	9/5/2011	FMCP PRIME PROPERTIES INC. – 2144 Pedro Gil 880 Zone 96 Sta. Ana Manila	Concrete Repair at New Building
EARTHCHEF INC.	8/23/2011	EARTHCHEF RESIDENCES – Manggahan Pasig Cty	Villasole, Waterproofing of Canopy and T&B
GREENLEE CP CORP.	8/11/2011	GREENLEE BLDG. - 2144 Pedro Gil 880 Zone 96 Sta. Ana Manila	Exterior Painting Works at Commercial and Warehouse Bldg.
OUR LADY OF PILLAR MEDICAL CENTER	7/11/2011	OUR LADY OF PILLAR MEDICAL CENTER – Bayan Luma, Imus Cavite	Waterproofing of Roof Deck, Concrete Gutter and Parapet Wall
REDMARK – WESTCOAST PHILS. INC.	5/7/2011	PALM PHILS. – Cabuyao, Laguna	Application of Floor Leveler



**WE DON'T JUST MANUFACTURE
WE CAN PRODUCE ACCORDING
TO YOUR SPECIFICATIONS**

COMPLETED PROJECTS

COMPLETED PROJECTS FOR THE YEAR 2010

Contractor / Owner	Date Finished	Name of Project / Location	Scope of Works
F.S. PHIL CORPORATION	12/4/2010	PSPC – C PROJECT WET PROCESS WORK – Clark Freeport Zone, Angeles Pampanga	Waterproofing of Cistern Tank, Roof Deck
CLINTON BUILDERS	11/22/2010	CONSTRUCTION OF ONE STOREY POLICE STATION – NBP Comp. Poblacion, Muntinlupa City	Waterproofing of Canopy and T&B
R & M CONSTRUCTION INC.	11/2/2010	SMC PET & CAPS BUILDING (TAMAMURA PACKAGING) – Canlubang Laguna	Waterproofing of Roof Deck
F.S. PHIL CORPORATION	10/15/2010	PSPC-C PROJECT WET PROCESS WORK – Clark Freeport Zone, Angeles Pampanga	Application of Grandgrout 8000, Floor Leveling at Trench Canal
G.T. GO ENTERPRISES	9/5/2010	JOSE GIANAN RESIDENTIAL BLDG. – Paseo de Magallanes, Pasay City	Waterproofing of Balcony, Roof Deck, T&B, Concrete Gutter, Cistern Tank and Septic Tank
F.S. PHIL CORPORATION	9/5/2010	PSPC-C PROJECT WET PROCESS WORK – Clark Freeport Zone, Angeles Pampanga	Epoxy Floor Coat
G.T. GO ENTERPRISES	F.S. PHIL CORPORATION	JAMES BONDOC RESIDENTIAL BLDG. – Paseo de Magallanes, Pasay City	Waterproofing of Balcony, Roof Deck, T&B, Concrete Gutter, Cistern Tank and Septic Tank
G.T. GO ENTERPRISES	8/28/2010	JAMES BONDOC RESIDENTIAL BLDG. – Paseo de Magallanes, Pasay City	Waterproofing Works and Water Plugging
ADMIRALTY REALTY	2/24/2010	ADMIRALTY REALTY - Canlubang, Laguna	Waterproofing of Basement Wall and Cistern Tank

COMPLETED PROJECTS FOR THE YEAR 2009

Contractor / Owner	Date Finished	Name of Project / Location	Scope of Works
APG DESIGN	12/12/2009	FORBESWOOD PARKLANE, Taguig City	Waterproofing Works of Jacuzzi
A2Y PHILCONSTRUCT CO. INC.	12/5/2009	SIMOUN APARTMENT, Quezon City	Waterproofing of Roof Deck

COMPLETED PROJECTS FOR THE YEAR 2007

Contractor / Owner	Date Finished	Name of Project / Location	Scope of Works
VARQUEZ BLDG. SYSTEM CORP.	6/4/2007	ANGEL PENAROYO RESIDENCE – Lot 29 Blk 4, Easter St.Saint Gregory, Subd. Cainta, Rizal	Waterproofing of T&B and Gutter
SUPER ASIA ERECTORS CORP.	2/15/2007	BEVERAGES PACKAGING SPECIALIST INC. BLDG. – Canlubang Laguna	Waterproofing and Repair of Roof Deck
G.T. GO ENTERPRISES	2/13/2007	SAGEE SO RESIDENCE – Dasmariñas Village Makati City	Waterproofing and Slope to Drain Topping



**WE DON'T JUST MANUFACTURE
WE CAN PRODUCE ACCORDING
TO YOUR SPECIFICATIONS**

YOUR GLOBAL PARTNER IN CONSTRUCTION CHEMICALS AND APPLICATION SERVICES

WE PROVIDE THE BEST SERVICES



WATERPROOFING APPLICATION



FLOORING APPLICATION

- SURFACE HARDENING/DENSIFICATION/SEALING •
- EPOXY • PU FLOORING • CEMENTITIOUS FLOORING •



CONCRETE REPAIR




EIFS INSTALLATION






STRUCTURAL STRENGTHENING (CARBON FIBER INSTALLATION)



GRAND ACES VENTURES, INC. **THE CONSTRUCTION CHEMICAL COMPANY**


 Unit 3 & 4, 138-142 M. L. Quezon Avenue,
Brgy. San Isidro, Angono, Rizal 1930

 +632 8451-0160, 8571-6021, 8451-0915

 +63 908-866-4908  +632 8571-6023

 grandaces@grandacesventures.com

 www.facebook.com/GrandAces.ConstructionChemicals

 www.grandacesventures.com

